

PMCA1 antibody

Cat. No. GTX130858

Host	Rabbit
Clonality	Polyclonal
Isotype	IgG
Applications	WB, IHC-P, IHC-Fr
Reactivity	Human, Mouse, Rat

 Review (2)Package
100 µl, 25 µl

Applications

Application Note

*Optimal dilutions/concentrations should be determined by the researcher.

Suggested dilution	Recommended dilution
WB	1:500-1:3000
IHC-P	1:100-1:1000
IHC-Fr	Assay dependent

Note : As is commonly seen with membrane proteins, significant hydrophobicity can lead to aggregation following boiling of samples prior to SDS-PAGE and subsequent western blotting. We recommend to avoid boiling in this case.

Not tested in other applications.

Calculated MW 139 kDa. ([Note](#))

Properties

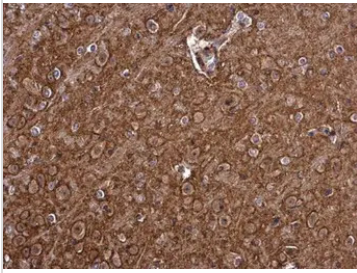
Form	Liquid
Buffer	PBS, 20% Glycerol
Preservative	0.025% ProClin 300
Storage	Store as concentrated solution. Centrifuge briefly prior to opening vial. For short-term storage (1-2 weeks), store at 4°C. For long-term storage, aliquot and store at -20°C or below. Avoid multiple freeze-thaw cycles.
Concentration	1.84 mg/ml (Please refer to the vial label for the specific concentration.)
Immunogen	Recombinant protein encompassing a sequence within the Intracellular domain of human PMCA1. The exact sequence is proprietary.
Purification	Purified by antigen-affinity chromatography.
Conjugation	Unconjugated

For full product information, images and publications, please visit our [website](#).

For laboratory research use only. Not for any clinical, therapeutic, or diagnostic use in humans or animals. Not for animal or human consumption.

Note

Purchasers shall not, and agree not to enable third parties to, analyze, copy, reverse engineer or otherwise attempt to determine the structure or sequence of the product.

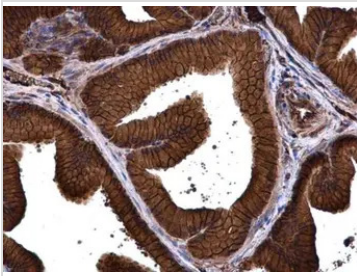
DATA IMAGES

GTX130858 IHC-P Image

PMCA1 antibody detects PMCA1 protein at cell membrane and cytoplasm in mouse brain by immunohistochemical analysis.

Sample: Paraffin-embedded mouse brain.

PMCA1 antibody (GTX130858) diluted at 1:500.

Antigen Retrieval: Citrate buffer, pH 6.0, 15 min

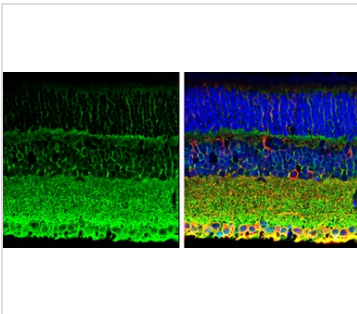

GTX130858 IHC-P Image

PMCA1 antibody detects PMCA1 protein at cell membrane and cytoplasm in rat prostate by immunohistochemical analysis.

Sample: Paraffin-embedded rat prostate.

PMCA1 antibody (GTX130858) diluted at 1:500.

Antigen Retrieval: Citrate buffer, pH 6.0, 15 min


GTX130858 IHC-P Image

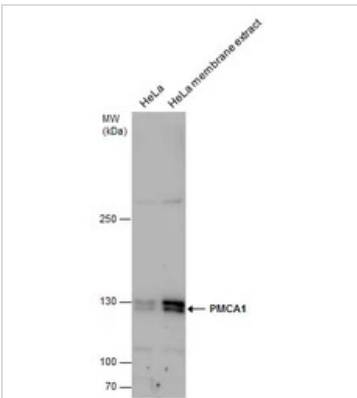
PMCA1 antibody detects PMCA1 protein expression by immunohistochemical analysis.

Sample: Paraffin-Embedded adult mouse retina.

Green: PMCA1 protein stained by PMCA1 antibody (GTX130858) diluted at 1:250.

Red: beta Tubulin 3/ TUJ1, stained by beta Tubulin 3/ TUJ1 antibody [GT11710] (GTX631836) diluted at 1:500.

Blue: Fluoroshield with DAPI (GTX30920).


GTX130858 WB Image

PMCA1 antibody detects PMCA1 protein by western blot analysis. HeLa whole cell extracts and membrane extracts (the extracts were unboiled) (30 µg) were separated by 5% SDS-PAGE, and the membrane was blotted with PMCA1 antibody (GTX130858) at a dilution of 1:1000.



For full product information, images and publications, please visit our [website](https://www.genetex.com).