

UQCRB antibody

Cat. No. GTX130895

Host	Rabbit
Clonality	Polyclonal
Isotype	IgG
Application	WB, IHC-P
Reactivity	Human, Mouse, Rat

Reference (1)

Package

100 µl, 25 µl

APPLICATION

Application Note

*Optimal dilutions/concentrations should be determined by the researcher.

Suggested dilution	Recommended dilution
WB	1:1000-1:10000
IHC-P	1:100-1:1000

Not tested in other applications.

Calculated MW 14 kDa. ([Note](#))

PROPERTIES

Form	Liquid
Buffer	PBS, 20% Glycerol
Preservative	0.025% ProClin 300
Storage	Store as concentrated solution. Centrifuge briefly prior to opening vial. For short-term storage (1-2 weeks), store at 4°C. For long-term storage, aliquot and store at -20°C or below. Avoid multiple freeze-thaw cycles.
Concentration	1.13 mg/ml (Please refer to the vial label for the specific concentration.)
Immunogen	Recombinant protein encompassing a sequence within the center region of human UQCRB. The exact sequence is proprietary.
Purification	Purified by antigen-affinity chromatography.
Conjugation	Unconjugated

Note

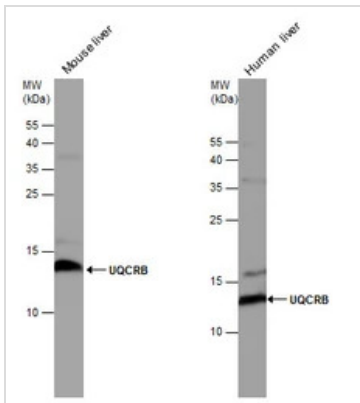
For laboratory research use only. Not for any clinical, therapeutic, or diagnostic use in humans or animals. Not for animal or human consumption.

Purchasers shall not, and agree not to enable third parties to, analyze, copy, reverse engineer or otherwise attempt to determine the structure or sequence of the product.



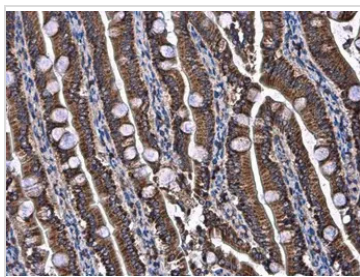
For full product information, images and publications, please visit our [website](#).

DATA IMAGES



GTX130895 WB Image

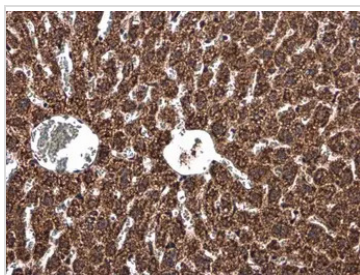
UQCRB antibody detects UQCRB protein by western blot analysis. Human tissue extracts (30 µg) and mouse tissue extracts (50 µg) were separated by 15% SDS-PAGE, and the membrane was blotted with UQCRB antibody (GTX130895) diluted at 1:5000.



GTX130895 IHC-P Image

UQCRB antibody detects UQCRB protein at mitochondria in rat intestine by immunohistochemical analysis. Sample: Paraffin-embedded rat intestine. UQCRB antibody (GTX130895) diluted at 1:500.

Antigen Retrieval: Citrate buffer, pH 6.0, 15 min



GTX130895 IHC-P Image

UQCRB antibody detects UQCRB protein at mitochondria in mouse liver by immunohistochemical analysis. Sample: Paraffin-embedded mouse liver. UQCRB antibody (GTX130895) diluted at 1:500.

Antigen Retrieval: Citrate buffer, pH 6.0, 15 min



For full product information, images and publications, please visit our [website](https://www.genetex.com).