

Sclerostin antibody

Cat. No. GTX130978

Host	Rabbit
Clonality	Polyclonal
Isotype	IgG
Applications	WB
Reactivity	Human

Package
100 µl, 25 µl

Applications

Application Note

*Optimal dilutions/concentrations should be determined by the researcher.

Suggested dilution	Recommended dilution
--------------------	----------------------

WB	1:500-1:3000
----	--------------

Not tested in other applications.

Calculated MW	24 kDa. (Note)
----------------------	----------------------------------

Properties

Form	Liquid
-------------	--------

Buffer	PBS, 20% Glycerol
---------------	-------------------

Preservative	0.025% ProClin 300
---------------------	--------------------

Storage	Store as concentrated solution. Centrifuge briefly prior to opening vial. For short-term storage (1-2 weeks), store at 4°C. For long-term storage, aliquot and store at -20°C or below. Avoid multiple freeze-thaw cycles.
----------------	--

Concentration	2.73 mg/ml (Please refer to the vial label for the specific concentration.)
----------------------	---

Immunogen	Recombinant protein encompassing a sequence within the center region of human Sclerostin. The exact sequence is proprietary.
------------------	--

Purification	Purified by antigen-affinity chromatography.
---------------------	--

Conjugation	Unconjugated
--------------------	--------------

Note

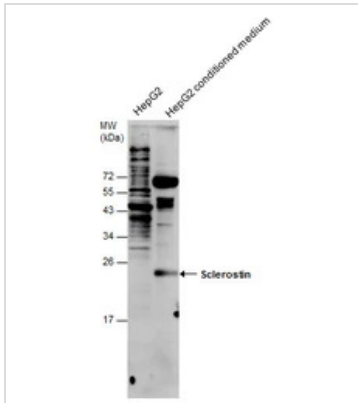
For laboratory research use only. Not for any clinical, therapeutic, or diagnostic use in humans or animals. Not for animal or human consumption.

Purchasers shall not, and agree not to enable third parties to, analyze, copy, reverse engineer or otherwise attempt to determine the structure or sequence of the product.



For full product information, images and publications, please visit our [website](#).

DATA IMAGES

**GTX130978 WB Image**

Sclerostin antibody detects Sclerostin protein by western blot analysis. HepG2 whole cell extracts and conditioned medium (30 μ g) were separated by 12% SDS-PAGE, and the membrane was blotted with Sclerostin antibody (GTX130978) diluted at 1:500.



For full product information, images and publications, please visit our [website](#).