

## G protein alpha 13 antibody

Cat. No. GTX131045

Host	Rabbit
Clonality	Polyclonal
Isotype	IgG
Application	WB, IHC-P
Reactivity	Human, Mouse, Rat

Package  
100 µl, 25 µl

## APPLICATION

## Application Note

\*Optimal dilutions/concentrations should be determined by the researcher.

Suggested dilution	Recommended dilution
WB	1:500-1:3000
IHC-P	1:100-1:1000

Not tested in other applications.

Calculated MW 44 kDa. ( [Note](#) )

## PROPERTIES

Form	Liquid
Buffer	PBS, 20% Glycerol
Preservative	0.025% ProClin 300
Storage	Store as concentrated solution. Centrifuge briefly prior to opening vial. For short-term storage (1-2 weeks), store at 4°C. For long-term storage, aliquot and store at -20°C or below. Avoid multiple freeze-thaw cycles.
Concentration	1.29 mg/ml (Please refer to the vial label for the specific concentration.)
Immunogen	Recombinant protein encompassing a sequence within the center region of human G protein alpha 13. The exact sequence is proprietary.
Purification	Purified by antigen-affinity chromatography.
Conjugation	Unconjugated

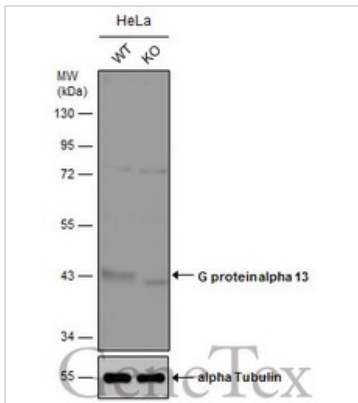
**Note**

For laboratory research use only. Not for any clinical, therapeutic, or diagnostic use in humans or animals. Not for animal or human consumption.

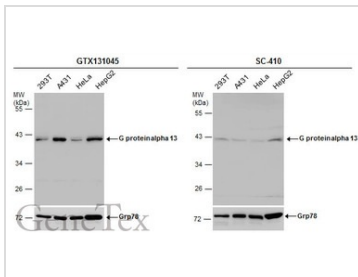
Purchasers shall not, and agree not to enable third parties to, analyze, copy, reverse engineer or otherwise attempt to determine the structure or sequence of the product.



For full product information, images and publications, please visit our [website](#).

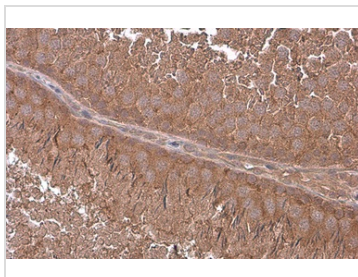
**DATA IMAGES**

**GTx131045 WB Image**

Wild-type (WT) and G protein alpha 13 knockout (KO) HeLa cell extracts (30  $\mu$ g) were separated by 10% SDS-PAGE, and the membrane was blotted with G protein alpha 13 antibody (GTx131045) diluted at 1:1000. The HRP-conjugated anti-rabbit IgG antibody (GTx213110-01) was used to detect the primary antibody.


**GTx131045 WB Image**

Various whole cell extracts (30  $\mu$ g) were separated by 10% SDS-PAGE, and the membranes were blotted with G protein alpha 13 antibody (GTx131045) diluted at 1:1000 and competitor's antibody (SC-410) diluted by 1:50.

\*The competitor is not affiliated with GeneTex and does not endorse this product.

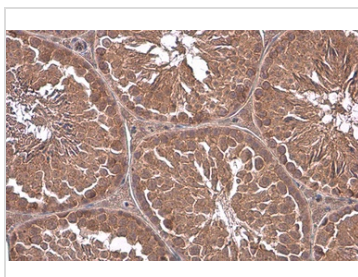

**GTx131045 IHC-P Image**

G protein alpha 13 antibody detects G protein alpha 13 protein at cytoplasm by immunohistochemical analysis.

Sample: Paraffin-embedded rat testis.

G protein alpha 13 stained by G protein alpha 13 antibody (GTx131045) diluted at 1:500.

Antigen Retrieval: Citrate buffer, pH 6.0, 15 min


**GTx131045 IHC-P Image**

G protein alpha 13 antibody detects G protein alpha 13 protein at cytoplasm by immunohistochemical analysis.

Sample: Paraffin-embedded mouse testis.

G protein alpha 13 stained by G protein alpha 13 antibody (GTx131045) diluted at 1:500.

Antigen Retrieval: Citrate buffer, pH 6.0, 15 min



For full product information, images and publications, please visit our [website](http://www.genetex.com).