

P2Y6 antibody

Cat. No. GTX13106

Host	Rabbit
Clonality	Polyclonal
Isotype	IgG
Applications	IHC-P
Reactivity	Human, Rat, Rabbit, Bovine, Hamster, Pig, Monkey

Package
25 µg

Applications

Application Note

*Optimal dilutions/concentrations should be determined by the researcher.

Suggested dilution	Recommended dilution
IHC-P	17 - 34 µg/ml

Not tested in other applications.

Properties

Form	Liquid
Buffer	PBS
Preservative	0.1% Sodium azide
Storage	Store as concentrated solution. Centrifuge briefly prior to opening vial. For short-term storage (1-2 weeks), store at 4°C. For long-term storage, aliquot and store at -20°C or below. Avoid multiple freeze-thaw cycles.
Concentration	1 mg/ml (Please refer to the vial label for the specific concentration.)
Immunogen	Synthetic 17 amino acid peptide from 2nd cytoplasmic domain of human P2RY6 / P2Y6.
Purification	Purified by affinity chromatography
Conjugation	Unconjugated

Note

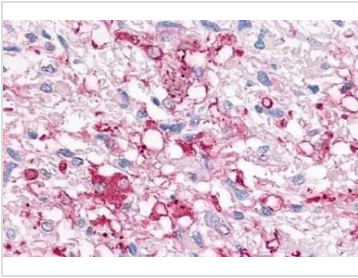
For laboratory research use only. Not for any clinical, therapeutic, or diagnostic use in humans or animals. Not for animal or human consumption.

Purchasers shall not, and agree not to enable third parties to, analyze, copy, reverse engineer or otherwise attempt to determine the structure or sequence of the product.

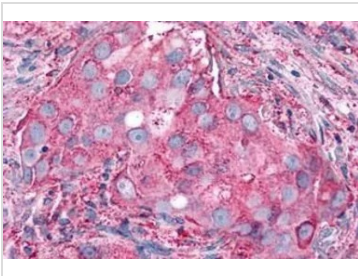


For full product information, images and publications, please visit our [website](#).

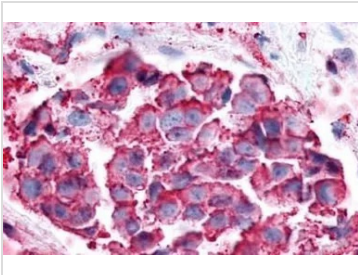
DATA IMAGES

**GTX13106 IHC-P Image**

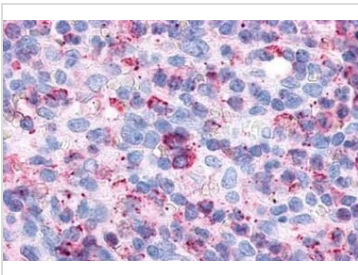
IHC-P analysis of brain, glioblastoma tissue using GTX13106 P2Y6 antibody.

**GTX13106 IHC-P Image**

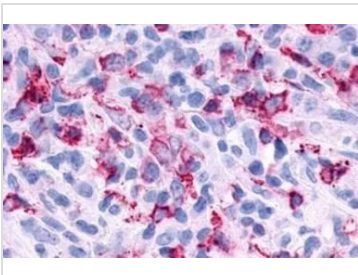
IHC-P analysis of human breast, carcinoma tissue using GTX13106 P2Y6 antibody.
Antigen retrieval : Heat-induced antigen retrieval

**GTX13106 IHC-P Image**

IHC-P analysis of breast, adenocarcinoma tissue using GTX13106 P2Y6 antibody.

**GTX13106 IHC-P Image**

IHC-P analysis of human spleen, red pulp tissue using GTX13106 P2Y6 antibody.
Antigen retrieval : Heat-induced antigen retrieval

**GTX13106 IHC-P Image**

IHC-P analysis of human lymph node, non-hodgkins lymphoma tissue using GTX13106 P2Y6 antibody.
Antigen retrieval : Heat-induced antigen retrieval



For full product information, images and publications, please visit our [website](#).