

# DHX36 antibody

**Cat. No. GTX131179**

<b>Host</b>	Rabbit
<b>Clonality</b>	Polyclonal
<b>Isotype</b>	IgG
<b>Application</b>	WB, IHC-P
<b>Reactivity</b>	Human, Mouse, Rat

Reference ( 3 )  
 Package  
 100 µl, 25 µl

## APPLICATION

### Application Note

\*Optimal dilutions/concentrations should be determined by the researcher.

Suggested dilution	Recommended dilution
WB	1:500-1:3000
IHC-P	1:100-1:1000

Not tested in other applications.

**Calculated MW** 115 kDa. ( [Note](#) )

## PROPERTIES

<b>Form</b>	Liquid
<b>Buffer</b>	PBS, 20% Glycerol
<b>Preservative</b>	0.025% ProClin 300
<b>Storage</b>	Store as concentrated solution. Centrifuge briefly prior to opening vial. For short-term storage (1-2 weeks), store at 4°C. For long-term storage, aliquot and store at -20°C or below. Avoid multiple freeze-thaw cycles.
<b>Concentration</b>	0.6 mg/ml (Please refer to the vial label for the specific concentration.)
<b>Immunogen</b>	Recombinant protein encompassing a sequence within the N-terminus region of human DHX36. The exact sequence is proprietary.
<b>Purification</b>	Purified by antigen-affinity chromatography.
<b>Conjugation</b>	Unconjugated

### Note

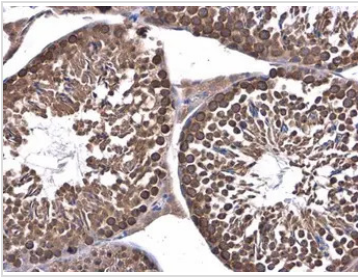
For laboratory research use only. Not for any clinical, therapeutic, or diagnostic use in humans or animals. Not for animal or human consumption.

Purchasers shall not, and agree not to enable third parties to, analyze, copy, reverse engineer or otherwise attempt to determine the structure or sequence of the product.



For full product information, images and publications, please visit our [website](#).

## DATA IMAGES



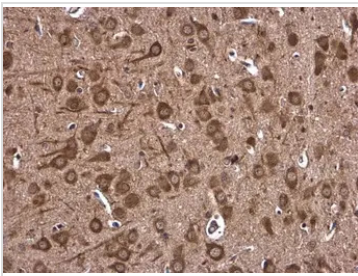
### GTX131179 IHC-P Image

DHX36 antibody detects DHX36 protein at cytoplasm in mouse testis by immunohistochemical analysis.

Sample: Paraffin-embedded mouse testis.

DHX36 antibody (GTX131179) diluted at 1:400.

Antigen Retrieval: Citrate buffer, pH 6.0, 15 min



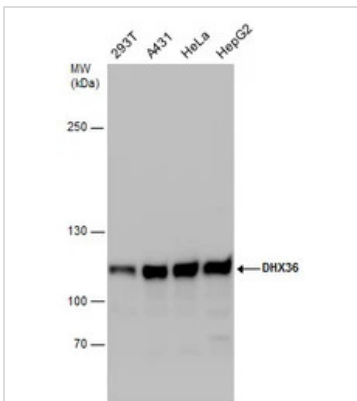
### GTX131179 IHC-P Image

DHX36 antibody detects DHX36 protein at cytoplasm in rat brain by immunohistochemical analysis.

Sample: Paraffin-embedded rat brain.

DHX36 antibody (GTX131179) diluted at 1:400.

Antigen Retrieval: Citrate buffer, pH 6.0, 15 min



### GTX131179 WB Image

Various whole cell extracts (30 µg) were separated by 5% SDS-PAGE, and the membrane was blotted with

DHX36 antibody (GTX131179) diluted at 1:1000.



For full product information, images and publications, please visit our [website](https://www.genetex.com).