

# Somatostatin receptor 2 antibody

**Cat. No. GTX13120**

<b>Host</b>	Rabbit
<b>Clonality</b>	Polyclonal
<b>Isotype</b>	IgG
<b>Application</b>	IHC-P
<b>Reactivity</b>	Human, Mouse, Rat, Rabbit, Bovine, Dog, Hamster, Pig, Monkey, Horse

**Package**

25 µg

## APPLICATION

### Application Note

\*Optimal dilutions/concentrations should be determined by the researcher.

Suggested dilution	Recommended dilution
IHC-P	15 - 20 µg/ml
Not tested in other applications.	

**Calculated MW** 41 kDa. ( [Note](#) )

## PROPERTIES

<b>Form</b>	Liquid
<b>Buffer</b>	PBS
<b>Preservative</b>	0.1% Sodium azide
<b>Storage</b>	Store as concentrated solution. Centrifuge briefly prior to opening vial. For short-term storage (1-2 weeks), store at 4°C. For long-term storage, aliquot and store at -20°C or below. Avoid multiple freeze-thaw cycles.
<b>Concentration</b>	1 mg/ml (Please refer to the vial label for the specific concentration.)
<b>Immunogen</b>	Synthetic 17 amino acid peptide from 2nd extracellular domain of human SSTR2.
<b>Purification</b>	Purified by affinity chromatography
<b>Conjugation</b>	Unconjugated

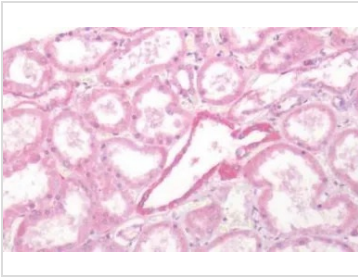
### Note

For laboratory research use only. Not for any clinical, therapeutic, or diagnostic use in humans or animals. Not for animal or human consumption.

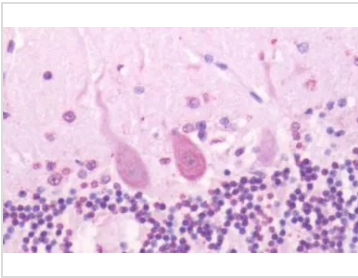
Purchasers shall not, and agree not to enable third parties to, analyze, copy, reverse engineer or otherwise attempt to determine the structure or sequence of the product.



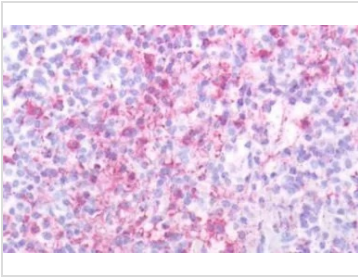
For full product information, images and publications, please visit our [website](#).

**DATA IMAGES**

**GTX13120 IHC-P Image**

IHC-P analysis of human kidney tissue using GTX13120 Somatostatin receptor 2 antibody.


**GTX13120 IHC-P Image**

IHC-P analysis of human brain, cerebellum tissue using GTX13120 Somatostatin receptor 2 antibody.


**GTX13120 IHC-P Image**

IHC-P analysis of human spleen tissue using GTX13120 Somatostatin receptor 2 antibody.



For full product information, images and publications, please visit our [website](#).