

Wilms Tumor 1 antibody

Cat. No. GTX131203

Host	Rabbit
Clonality	Polyclonal
Isotype	IgG
Application	ICC/IF
Reactivity	Human

Package
100 µl, 25 µl

APPLICATION

Application Note

*Optimal dilutions/concentrations should be determined by the researcher.

Suggested dilution	Recommended dilution
ICC/IF	1:100-1:1000
Not tested in other applications.	

Calculated MW 49 kDa. ([Note](#))

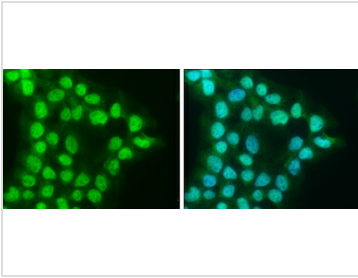
PROPERTIES

Form	Liquid
Buffer	PBS, 20% Glycerol
Preservative	0.025% ProClin 300
Storage	Store as concentrated solution. Centrifuge briefly prior to opening vial. For short-term storage (1-2 weeks), store at 4°C. For long-term storage, aliquot and store at -20°C or below. Avoid multiple freeze-thaw cycles.
Concentration	1.28 mg/ml (Please refer to the vial label for the specific concentration.)
Immunogen	Carrier-protein conjugated synthetic peptide encompassing a sequence within the N-terminus region of human Wilms Tumor 1. The exact sequence is proprietary.
Purification	Purified by antigen-affinity chromatography.
Conjugation	Unconjugated
Note	For laboratory research use only. Not for any clinical, therapeutic, or diagnostic use in humans or animals. Not for animal or human consumption. Purchasers shall not, and agree not to enable third parties to, analyze, copy, reverse engineer or otherwise attempt to determine the structure or sequence of the product.



For full product information, images and publications, please visit our [website](#).

DATA IMAGES



GTX131203 ICC/IF Image

Wilms Tumor 1 antibody detects Wilms Tumor 1 protein at nucleus by immunofluorescent analysis.

Sample: NT2D1 cells were fixed in 4% paraformaldehyde at RT for 15 min.

Green: Wilms Tumor 1 stained by Wilms Tumor 1 antibody (GTX131203) diluted at 1:500.

Blue: Hoechst 33342 staining.



For full product information, images and publications, please visit our [website](#).