

proBNP antibody [24E11]

Cat. No. GTX13123

Host	Mouse
Clonality	Monoclonal
Isotype	IgG2a
Applications	WB, ELISA, Sandwich ELISA
Reactivity	Human

Package
200 µg

Applications

Application Note

*Optimal dilutions/concentrations should be determined by the researcher.

Suggested dilution	Recommended dilution
WB	Assay dependent
ELISA	Assay dependent
Sandwich ELISA	Assay dependent

Note : Capture : GTX13115, Detection : GTX13123. This pair recognize the antigen in blood of patients with heart failure, unstable angina and myocardial infarction.

Not tested in other applications.

Calculated MW	15 kDa. (Note)
Product Note	NT-proBNP and proBNP

Properties	
Form	Liquid
Buffer	PBS
Preservative	0.09% Sodium azide
Storage	Store as concentrated solution. Centrifuge briefly prior to opening vial. Store at 4°C.
Concentration	Batch dependent (Please refer to the vial label for the specific concentration.)
Immunogen	Synthetic N-terminal pro brain natriuretic peptide (NT-proBNP), corresponding to amino acid residues a.a.r. 61-76. The peptides used for immunization were conjugated with carrier protein.
Purification	Protein A purified
Conjugation	Unconjugated



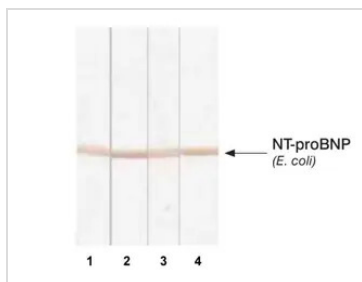
For full product information, images and publications, please visit our [website](#).

For laboratory research use only. Not for any clinical, therapeutic, or diagnostic use in humans or animals. Not for animal or human consumption.

Note

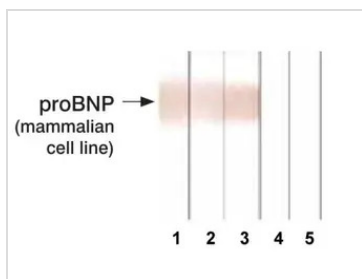
Purchasers shall not, and agree not to enable third parties to, analyze, copy, reverse engineer or otherwise attempt to determine the structure or sequence of the product.

DATA IMAGES



GTx13123 WB Image

Detection of human recombinant NT-proBNP expressed in *E. coli* in Western blotting by different monoclonal antibodies after Tricine-SDS gel electrophoresis. Antigen: recombinant NT-proBNP expressed in *E. coli*, 2.5 ug; Lane 1: proBNP antibody [5B6] (GTx13111); Lane 2: proBNP antibody [15F11] (GTx13115); Lane 3: proBNP antibody [11D1] (GTx13059); Lane 4: proBNP antibody [24E11] (GTx13123)



GTx13123 WB Image

Detection of human recombinant proBNP expressed in mammalian cells in Western blotting by different monoclonal antibodies after Tricine-SDS gel electrophoresis. Antigen: recombinant proBNP expressed in mammalian cells, 0.15 ug; Lane 1: proBNP antibody [5B6] (GTx13111); Lane 2: proBNP antibody [15F11] (GTx13115); Lane 3: proBNP antibody [3G12] (GTx14712); Lane 4: proBNP antibody [11D1] (GTx13059); Lane 5: proBNP antibody [24E11] (GTx13123); Both proBNP antibody [11D1] (GTx13059) and proBNP antibody [24E11] (GTx13123) do not recognize glycosylated proBNP expressed in mammalian cells.



For full product information, images and publications, please visit our [website](https://www.genetex.com).