

Glutaminase C (GAC) antibody

Cat. No. GTX131263

Host	Rabbit
Clonality	Polyclonal
Isotype	IgG
Application	WB, ICC/IF, IHC-P, IP
Reactivity	Human, Mouse

Reference (4)

★★★★☆ Review (1)

Package

100 µl, 25 µl

APPLICATION

Application Note

*Optimal dilutions/concentrations should be determined by the researcher.

Suggested dilution	Recommended dilution
WB	1:1000-1:10000
ICC/IF	1:100-1:1000
IHC-P	1:100-1:1000
IP	1:100-1:500

Not tested in other applications.

Calculated MW 65 kDa. ([Note](#))

Product Note Specific for GAC but not KGA isoform

PROPERTIES

Form	Liquid
Buffer	PBS, 20% Glycerol
Preservative	0.025% ProClin 300
Storage	Store as concentrated solution. Centrifuge briefly prior to opening vial. For short-term storage (1-2 weeks), store at 4°C. For long-term storage, aliquot and store at -20°C or below. Avoid multiple freeze-thaw cycles.
Concentration	0.5 mg/ml (Please refer to the vial label for the specific concentration.)
Immunogen	Recombinant protein encompassing a sequence within the C-terminus region of human Glutaminase C (GAC). The exact sequence is proprietary.
Purification	Purified by antigen-affinity chromatography.
Conjugation	Unconjugated



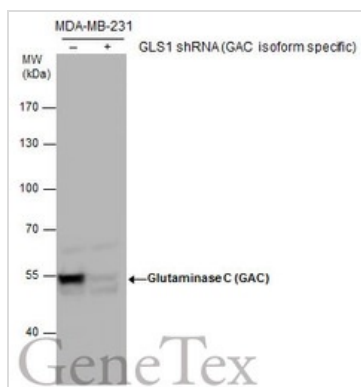
For full product information, images and publications, please visit our [website](#).

For laboratory research use only. Not for any clinical, therapeutic, or diagnostic use in humans or animals. Not for animal or human consumption.

Note

Purchasers shall not, and agree not to enable third parties to, analyze, copy, reverse engineer or otherwise attempt to determine the structure or sequence of the product.

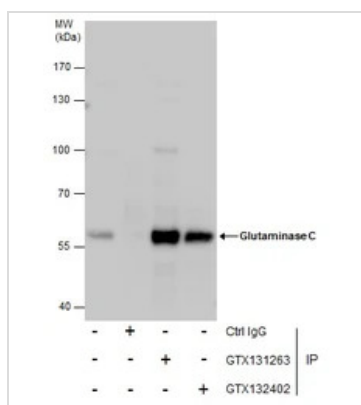
DATA IMAGES



GTX131263 WB Image

Glutaminase C (GAC) antibody validation by shRNA knock-down. Non-transfected (-) and GLS1(GAC isoform specific) shRNA-transfected MDA-MB-231 whole cell extracts (30 µg) were separated by 7.5% SDS-PAGE, and the membrane was blotted with Glutaminase C (GAC) antibody (GTX131263) at a dilution of 1:5000.

This antibody specifically recognizes GAC but not the KGA isoform

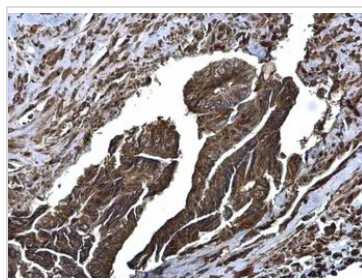


GTX131263 IP Image

Immunoprecipitation of Glutaminase C protein from MDA-MB-231 whole cell extracts using 5 µg of Glutaminase C antibody (GTX131263) or Glutaminase C antibody (GTX132402).

Western blot analysis was performed using Glutaminase C antibody (GTX131263).

EasyBlot anti-Rabbit IgG (GTX221666-01) was used as a secondary reagent.



GTX131263 IHC-P Image

Glutaminase C antibody detects Glutaminase C protein at cytoplasm on human colon carcinoma by immunohistochemical analysis.

Sample: Paraffin-embedded human colon carcinoma.

Glutaminase C antibody (GTX131263) diluted at 1:500.

Antigen Retrieval: Citrate buffer, pH 6.0, 15 min



For full product information, images and publications, please visit our [website](https://www.genetex.com).