

# Hepatitis C virus NS5B protein antibody

**Cat. No. GTX131273**

<b>Host</b>	Rabbit
<b>Clonality</b>	Polyclonal
<b>Isotype</b>	IgG
<b>Applications</b>	WB
<b>Reactivity</b>	Hepatitis C virus

References ( 1 )

Package

100 µl, 25 µl

## Applications

### Application Note

\*Optimal dilutions/concentrations should be determined by the researcher.

Suggested dilution	Recommended dilution
WB	1:500-1:3000

Not tested in other applications.

## Properties

<b>Form</b>	Liquid
<b>Buffer</b>	PBS, 20% Glycerol
<b>Preservative</b>	0.025% ProClin 300
<b>Storage</b>	Store as concentrated solution. Centrifuge briefly prior to opening vial. For short-term storage (1-2 weeks), store at 4°C. For long-term storage, aliquot and store at -20°C or below. Avoid multiple freeze-thaw cycles.
<b>Concentration</b>	1 mg/ml (Please refer to the vial label for the specific concentration.)
<b>Immunogen</b>	Recombinant protein encompassing a sequence within the center region of Hepatitis C virus NS5B protein (HCV 2a (strain JFH-1)). The exact sequence is proprietary.
<b>Purification</b>	Purified by antigen-affinity chromatography.
<b>Conjugation</b>	Unconjugated

### Note

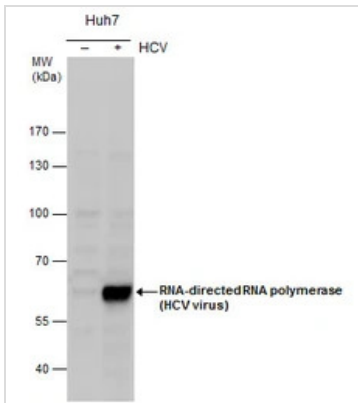
For laboratory research use only. Not for any clinical, therapeutic, or diagnostic use in humans or animals. Not for animal or human consumption.

Purchasers shall not, and agree not to enable third parties to, analyze, copy, reverse engineer or otherwise attempt to determine the structure or sequence of the product.



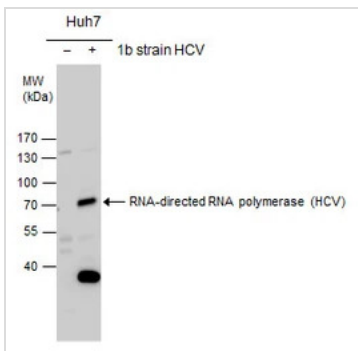
For full product information, images and publications, please visit our [website](#).

## DATA IMAGES



### GTX131273 WB Image

RNA-directed RNA polymerase (HCV virus) antibody detects RNA-directed RNA polymerase (HCV virus) protein by western blot analysis. Un-infected (-) and infected (+, HCV infection for ) whole cell extracts (30 µg) were separated by 7.5% SDS-PAGE, and the membrane was blotted with RNA-directed RNA polymerase (HCV virus) antibody (GTX131273) at a dilution of 1:1000.



### GTX131273 WB Image

RNA-directed RNA polymerase(HCV virus) antibody detects RNA-directed RNA polymerase protein by western blot analysis. Non-transfected (-) and RNA-directed RNA polymerase-transfected (+) Huh7 whole cell extracts (30µg) were separated by 7.5% SDS-PAGE, and the membrane was blotted with RNA-directed RNA polymerase(HCV virus) antibody (GTX131273) at a dilution of 1:2000



For full product information, images and publications, please visit our [website](https://www.genetex.com).