

Hepatitis C virus NS5B protein antibody

Cat. No. GTX131274

Host	Rabbit
Clonality	Polyclonal
Isotype	IgG
Application	WB
Reactivity	Hepatitis C virus

Package
100 µl, 25 µl

APPLICATION

Application Note

*Optimal dilutions/concentrations should be determined by the researcher.

Suggested dilution	Recommended dilution
WB	1:500-1:3000

Not tested in other applications.

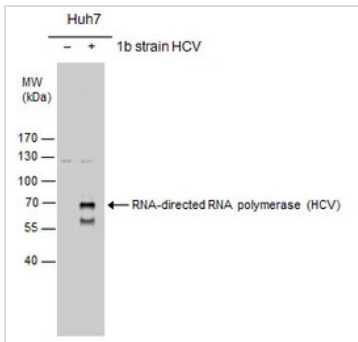
PROPERTIES

Form	Liquid
Buffer	PBS, 20% Glycerol
Preservative	0.025% ProClin 300
Storage	Store as concentrated solution. Centrifuge briefly prior to opening vial. For short-term storage (1-2 weeks), store at 4°C. For long-term storage, aliquot and store at -20°C or below. Avoid multiple freeze-thaw cycles.
Concentration	0.72 mg/ml (Please refer to the vial label for the specific concentration.)
Immunogen	Recombinant protein encompassing a sequence within the center region of Hepatitis C virus NS5B protein (HCV 2a (strain JFH-1)). The exact sequence is proprietary.
Purification	Purified by antigen-affinity chromatography.
Conjugation	Unconjugated
Note	For laboratory research use only. Not for any clinical, therapeutic, or diagnostic use in humans or animals. Not for animal or human consumption. Purchasers shall not, and agree not to enable third parties to, analyze, copy, reverse engineer or otherwise attempt to determine the structure or sequence of the product.



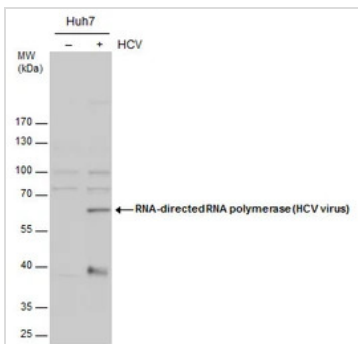
For full product information, images and publications, please visit our [website](#).

DATA IMAGES



GTX131274 WB Image

RNA-directed RNA polymerase(HCV virus) antibody detects RNA-directed RNA polymerase protein by western blot analysis. Non-transfected (-) and RNA-directed RNA polymerase-transfected (+) Huh7 whole cell extracts (30µg) were separated by 7.5% SDS-PAGE, and the membrane was blotted with RNA-directed RNA polymerase(HCV virus) antibody (GTX131274) at a dilution of 1:1000



GTX131274 WB Image

RNA-directed RNA polymerase (HCV virus) antibody detects RNA-directed RNA polymerase (HCV virus) protein by western blot analysis. Un-infected (-) and infected (+, HCV infection for) Huh7 whole cell extracts (20 µg) were separated by 10% SDS-PAGE, and the membrane was blotted with RNA-directed RNA polymerase (HCV virus) antibody (GTX131274) diluted by 1:1000.



For full product information, images and publications, please visit our [website](https://www.genetex.com).