

HCN1 antibody

Cat. No. GTX131334

Host	Rabbit
Clonality	Polyclonal
Isotype	IgG
Applications	ICC/IF, IHC-P, IHC-Fr
Reactivity	Mouse, Rat

References (1)

Package

100 µl, 25 µl

Applications

Application Note

*Optimal dilutions/concentrations should be determined by the researcher.

Suggested dilution	Recommended dilution
ICC/IF	1:100-1:1000
IHC-P	1:100-1:1000
IHC-Fr	1:100-1:1000

Not tested in other applications.

Calculated MW 99 kDa. ([Note](#))

Properties

Form	Liquid
Buffer	PBS, 20% Glycerol
Preservative	0.025% ProClin 300
Storage	Store as concentrated solution. Centrifuge briefly prior to opening vial. For short-term storage (1-2 weeks), store at 4°C. For long-term storage, aliquot and store at -20°C or below. Avoid multiple freeze-thaw cycles.
Concentration	1.45 mg/ml (Please refer to the vial label for the specific concentration.)
Immunogen	Recombinant protein encompassing a sequence within the Intracellular domain of human HCN1. The exact sequence is proprietary.
Purification	Purified by antigen-affinity chromatography.
Conjugation	Unconjugated

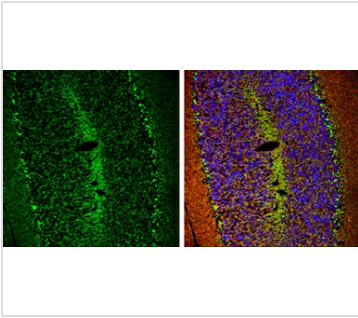
Note For laboratory research use only. Not for any clinical, therapeutic, or diagnostic use in humans or animals. Not for animal or human consumption.

Purchasers shall not, and agree not to enable third parties to, analyze, copy, reverse engineer or otherwise attempt to determine the structure or sequence of the product.



For full product information, images and publications, please visit our [website](#).

DATA IMAGES

**GTX131334 IHC-Fr Image**

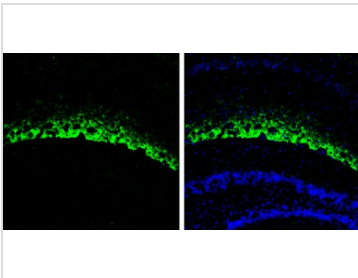
HCN1 antibody detects HCN1 protein expression by immunohistochemical analysis.

Sample: Frozen-sectioned adult mouse cerebellum.

Green: HCN1 protein stained by HCN1 antibody (GTX131334) diluted at 1:250.

Red: beta Tubulin 3/ TUJ1, stained by beta Tubulin 3/ TUJ1 antibody [GT11710] (GTX631836) diluted at 1:500.

Blue: Fluoroshield with DAPI (GTX30920).

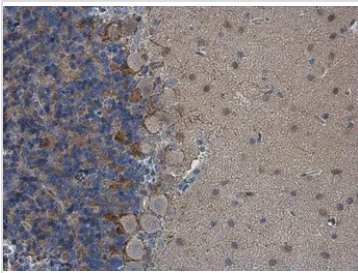
**GTX131334 IHC-Fr Image**

HCN1 antibody detects HCN1 protein expression by immunohistochemical analysis.

Sample: Frozen-sectioned adult mouse hippocampus.

Green: HCN1 protein stained by HCN1 antibody (GTX131334) diluted at 1:250.

Blue: Fluoroshield with DAPI (GTX30920).

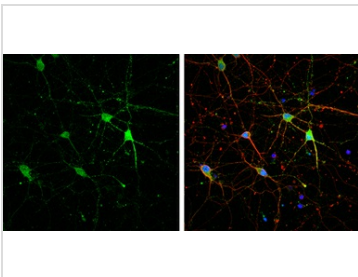
**GTX131334 IHC-P Image**

HCN1 antibody detects HCN1 protein at cell membrane in rat brain by immunohistochemical analysis.

Sample: Paraffin-embedded rat brain.

HCN1 antibody (GTX131334) diluted at 1:500.

Antigen Retrieval: Citrate buffer, pH 6.0, 15 min

**GTX131334 ICC/IF Image**

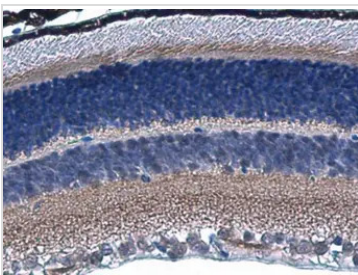
HCN1 antibody detects HCN1 protein by immunofluorescent analysis.

Sample: DIV9 rat E18 primary cortical neuron cells were fixed in 4% paraformaldehyde at RT for 15 min.

Green: HCN1 stained by HCN1 antibody (GTX131334) diluted at 1:500.

Red: beta Tubulin 3/ Tuj1, stained by beta Tubulin 3/ Tuj1 antibody [GT1338] (GTX631831) diluted at 1:500.

Blue: Fluoroshield with DAPI (GTX30920).

**GTX131334 IHC-P Image**

HCN1 antibody detects HCN1 protein in mouse retina by immunohistochemical analysis.

Sample: Paraffin-embedded mouse retina.

HCN1 antibody (GTX131334) diluted at 1:800.

Antigen Retrieval: Citrate buffer, pH 6.0, 15 min



For full product information, images and publications, please visit our [website](#).