

Brachyury antibody

Cat. No. GTX131339

Host	Rabbit
Clonality	Polyclonal
Isotype	IgG
Applications	ICC/IF, IHC-P
Reactivity	Human, Mouse, Rat

Package
100 µl, 25 µl

Applications

Application Note

*Optimal dilutions/concentrations should be determined by the researcher.

Suggested dilution	Recommended dilution
ICC/IF	Assay dependent
IHC-P	1:100-1:1000

Not tested in other applications.

Properties

Form	Liquid
Buffer	PBS, 20% Glycerol
Preservative	0.025% ProClin 300
Storage	Store as concentrated solution. Centrifuge briefly prior to opening vial. For short-term storage (1-2 weeks), store at 4°C. For long-term storage, aliquot and store at -20°C or below. Avoid multiple freeze-thaw cycles.
Concentration	1.29 mg/ml (Please refer to the vial label for the specific concentration.)
Immunogen	Recombinant protein encompassing a sequence within the centers region of human Brachyury. The exact sequence is proprietary.
Purification	Purified by antigen-affinity chromatography.
Conjugation	Unconjugated

Note

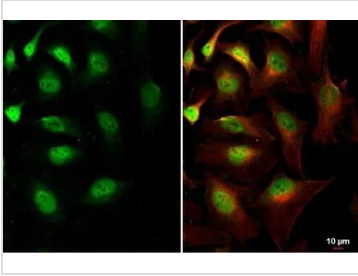
For laboratory research use only. Not for any clinical, therapeutic, or diagnostic use in humans or animals. Not for animal or human consumption.

Purchasers shall not, and agree not to enable third parties to, analyze, copy, reverse engineer or otherwise attempt to determine the structure or sequence of the product.



For full product information, images and publications, please visit our [website](#).

DATA IMAGES



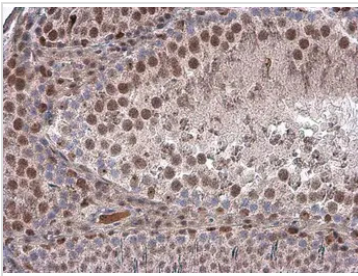
GTX131339 ICC/IF Image

Brachyury antibody detects Brachyury protein at nucleus by immunofluorescent analysis.

Sample: HeLa cells were fixed in 4% paraformaldehyde at RT for 15 min.

Green: Brachyury stained by Brachyury antibody (GTX131339) diluted at 1:500.

Red: alpha Tubulin, a cytoskeleton marker, stained by alpha Tubulin antibody [GT114] (GTX628802) diluted at 1:1000.



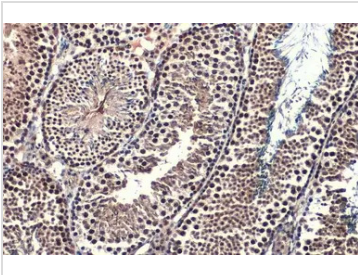
GTX131339 IHC-P Image

Brachyury antibody detects Brachyury protein at nucleus in rat testis by immunohistochemical analysis.

Sample: Paraffin-embedded rat testis.

Brachyury antibody (GTX131339) diluted at 1:2000.

Antigen Retrieval: Citrate buffer, pH 6.0, 15 min



GTX131339 IHC-P Image

Brachyury antibody detects Brachyury protein at nucleus by immunohistochemical analysis.

Sample: Paraffin-embedded mouse testis.

Brachyury stained by Brachyury antibody (GTX131339) diluted at 1:500.

Antigen Retrieval: Citrate buffer, pH 6.0, 15 min



For full product information, images and publications, please visit our [website](https://www.genetex.com).