

Japanese encephalitis virus NS5 antibody

Cat. No. GTX131360

Host	Rabbit
Clonality	Polyclonal
Isotype	IgG
Applications	WB, ICC/IF
Reactivity	Japanese encephalitis virus

Package
100 µl, 25 µl

Applications

Application Note

*Optimal dilutions/concentrations should be determined by the researcher.

Suggested dilution	Recommended dilution
WB	1:500-1:3000
ICC/IF	1:100-1:3000

Not tested in other applications.

Calculated MW 103 kDa. ([Note](#))

Properties

Form	Liquid
Buffer	PBS, 20% Glycerol
Preservative	0.025% ProClin 300
Storage	Store as concentrated solution. Centrifuge briefly prior to opening vial. For short-term storage (1-2 weeks), store at 4°C. For long-term storage, aliquot and store at -20°C or below. Avoid multiple freeze-thaw cycles.
Concentration	0.13 mg/ml (Please refer to the vial label for the specific concentration.)
Immunogen	Recombinant protein encompassing a sequence within the center region of NS5 (JEV). (Japanese Encephalitis Virus strain Jaoars982) The exact sequence is proprietary.
Purification	Purified by antigen-affinity chromatography.
Conjugation	Unconjugated

Note

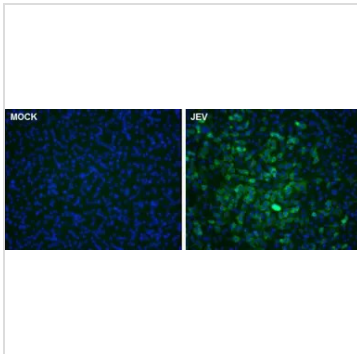
For laboratory research use only. Not for any clinical, therapeutic, or diagnostic use in humans or animals. Not for animal or human consumption.

Purchasers shall not, and agree not to enable third parties to, analyze, copy, reverse engineer or otherwise attempt to determine the structure or sequence of the product.



For full product information, images and publications, please visit our [website](#).

DATA IMAGES



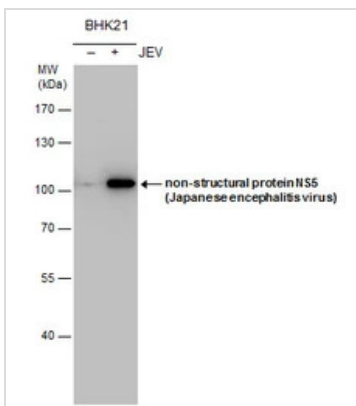
GTX131360 ICC/IF Image

NS5 protein (Japanese encephalitis virus) antibody detects NS5 protein (Japanese encephalitis virus) by immunofluorescent analysis.

Samples: BHK-21 cells mock (left) and infected with Japanese encephalitis virus (right) were fixed in methanol.

Green: NS5 (Japanese encephalitis virus) protein stained by NS5 protein (Japanese encephalitis virus) antibody (GTX131360) diluted at 1:3000.

Blue: Hoechst 33342 staining.



GTX131360 WB Image

NS5 (JEV) antibody detects NS5 (JEV) protein by Western blot analysis. Un-infected (-) and infected (+, JEV infection) BHK-21 whole cell extracts (5 µg) were separated by 7.5% SDS-PAGE, and the membrane was blotted with NS5 (JEV) antibody (GTX131360) at a dilution of 1:3000 and developed with Trident femto Western HRP Substrate (GTX14698).



For full product information, images and publications, please visit our [website](https://www.genetex.com).