

## Japanese encephalitis virus NS1 antibody

Cat. No. GTX131369

Host	Rabbit
Clonality	Polyclonal
Isotype	IgG
Applications	WB, ICC/IF
Reactivity	Japanese encephalitis virus

Package  
100 µl, 25 µl

## Applications

## Application Note

\*Optimal dilutions/concentrations should be determined by the researcher.

Suggested dilution	Recommended dilution
WB	1:1000-1:10000
ICC/IF	1:100-1:2500

Not tested in other applications.

Calculated MW 40 kDa. ( [Note](#) )

## Properties

Form	Liquid
Buffer	PBS, 20% Glycerol
Preservative	0.025% ProClin 300
Storage	Store as concentrated solution. Centrifuge briefly prior to opening vial. For short-term storage (1-2 weeks), store at 4°C. For long-term storage, aliquot and store at -20°C or below. Avoid multiple freeze-thaw cycles.
Concentration	0.16 mg/ml (Please refer to the vial label for the specific concentration.)
Immunogen	Recombinant protein encompassing a sequence within the center region of NS1 (JEV). (Japanese Encephalitis Virus strain Jaoars982) The exact sequence is proprietary.
Purification	Purified by antigen-affinity chromatography.
Conjugation	Unconjugated

## Note

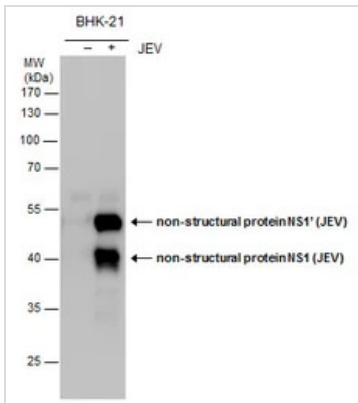
For laboratory research use only. Not for any clinical, therapeutic, or diagnostic use in humans or animals. Not for animal or human consumption.

Purchasers shall not, and agree not to enable third parties to, analyze, copy, reverse engineer or otherwise attempt to determine the structure or sequence of the product.



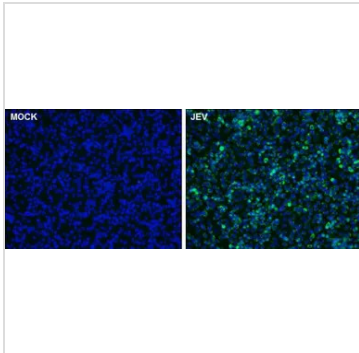
For full product information, images and publications, please visit our [website](#).

## DATA IMAGES



### GTX131369 WB Image

non-structural protein NS1 (JEV) antibody detects non-structural protein NS1 (JEV) protein by western blot analysis. Un-infected (-) and infected (+, JEV infection) BHK-21 whole cell extracts (5 µg) were separated by 10% SDS-PAGE, and the membrane was blotted with non-structural protein NS1 (JEV) antibody (GTX131369) at a dilution of 1:5000.



### GTX131369 ICC/IF Image

NS1 protein (Japanese encephalitis virus) antibody detects NS1 protein (Japanese encephalitis virus) by immunofluorescent analysis.

Samples: BHK-21 cells mock (left) and infected with Japanese encephalitis virus (right) were fixed in methanol.

Green: NS1 (Japanese encephalitis virus) protein stained by NS1 protein (Japanese encephalitis virus) antibody (GTX131369) diluted at 1:2500.

Blue: Hoechst 33342 staining.



For full product information, images and publications, please visit our [website](https://www.genetex.com).