

## RBM8A antibody

Cat. No. GTX131387

Host	Rabbit
Clonality	Polyclonal
Isotype	IgG
Applications	WB, ICC/IF, IHC-P
Reactivity	Human, Rat

References ( 3 )

Package

100 µl, 25 µl

## Applications

## Application Note

\*Optimal dilutions/concentrations should be determined by the researcher.

Suggested dilution	Recommended dilution
WB	1:500-1:3000
ICC/IF	1:100-1:1000
IHC-P	1:100-1:1000

Not tested in other applications.

Calculated MW 20 kDa. ( [Note](#) )

## Properties

Form	Liquid
Buffer	PBS, 1% BSA, 20% Glycerol
Preservative	0.025% ProClin 300
Storage	Store as concentrated solution. Centrifuge briefly prior to opening vial. For short-term storage (1-2 weeks), store at 4°C. For long-term storage, aliquot and store at -20°C or below. Avoid multiple freeze-thaw cycles.
Concentration	0.46 mg/ml (Please refer to the vial label for the specific concentration.)
Immunogen	Recombinant protein encompassing a sequence within the center region of human RBM8A. The exact sequence is proprietary.
Purification	Purified by antigen-affinity chromatography.
Conjugation	Unconjugated

## Note

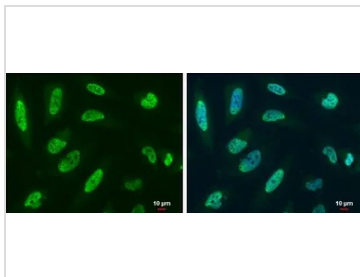
For laboratory research use only. Not for any clinical, therapeutic, or diagnostic use in humans or animals. Not for animal or human consumption.

Purchasers shall not, and agree not to enable third parties to, analyze, copy, reverse engineer or otherwise attempt to determine the structure or sequence of the product.



For full product information, images and publications, please visit our [website](#).

## DATA IMAGES



### GTx131387 ICC/IF Image

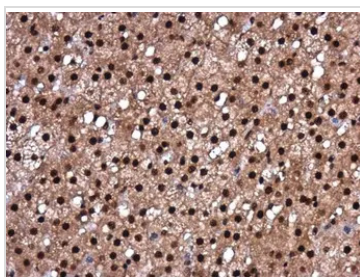
RBM8A antibody detects RBM8A protein at cytoplasm and nucleus by immunofluorescent analysis.

Sample: HeLa cells were fixed in 4% paraformaldehyde at RT for 15 min.

Green: RBM8A protein stained by RBM8A antibody (GTx131387) diluted at 1:500.

Blue: Hoechst 33342 staining.

Scale bar = 10  $\mu$ m.



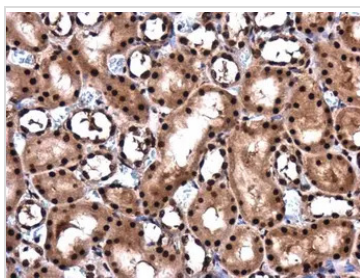
### GTx131387 IHC-P Image

RBM8A antibody detects RBM8A protein at cytoplasm and nucleus in rat adrenal gland by immunohistochemical analysis.

Sample: Paraffin-embedded rat adrenal gland.

RBM8A antibody (GTx131387) diluted at 1:500.

Antigen Retrieval: Citrate buffer, pH 6.0, 15 min



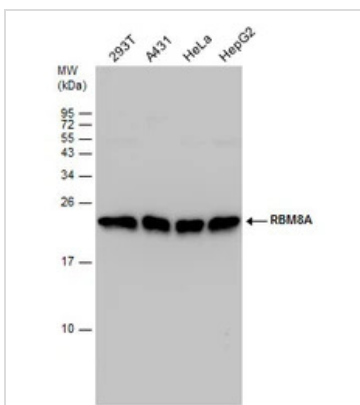
### GTx131387 IHC-P Image

RBM8A antibody detects RBM8A protein at cytoplasm and nucleus in rat kidney by immunohistochemical analysis.

Sample: Paraffin-embedded rat kidney.

RBM8A antibody (GTx131387) diluted at 1:500.

Antigen Retrieval: Citrate buffer, pH 6.0, 15 min



### GTx131387 WB Image

Various whole cell extracts (30  $\mu$ g) were separated by 15% SDS-PAGE, and the membrane was blotted with RBM8A antibody (GTx131387) diluted at 1:1000.



For full product information, images and publications, please visit our [website](https://www.genetex.com).