

## 5-HT1B receptor antibody

Cat. No. GTX13154

<b>Host</b>	Rabbit
<b>Clonality</b>	Polyclonal
<b>Isotype</b>	IgG
<b>Applications</b>	IHC-P
<b>Reactivity</b>	Human, Mouse, Rat, Rabbit, Bovine, Dog, Hamster, Guinea pig, Pig, Bat

Package

25 µg

## Applications

## Application Note

\*Optimal dilutions/concentrations should be determined by the researcher.

Suggested dilution	Recommended dilution
IHC-P	7 µg/ml

Not tested in other applications.

## Properties

<b>Form</b>	Liquid
<b>Buffer</b>	PBS
<b>Preservative</b>	0.1% Sodium azide
<b>Storage</b>	Store as concentrated solution. Centrifuge briefly prior to opening vial. For short-term storage (1-2 weeks), store at 4°C. For long-term storage, aliquot and store at -20°C or below. Avoid multiple freeze-thaw cycles.
<b>Concentration</b>	1 mg/ml (Please refer to the vial label for the specific concentration.)
<b>Immunogen</b>	Synthetic 16 amino acid peptide from 3rd cytoplasmic domain of human 5HT1B Receptor.
<b>Purification</b>	Purified by affinity chromatography
<b>Conjugation</b>	Unconjugated

## Note

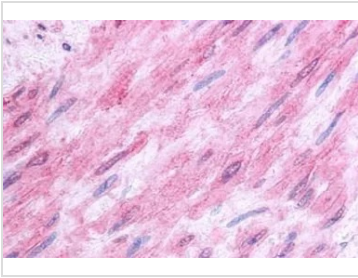
For laboratory research use only. Not for any clinical, therapeutic, or diagnostic use in humans or animals. Not for animal or human consumption.

Purchasers shall not, and agree not to enable third parties to, analyze, copy, reverse engineer or otherwise attempt to determine the structure or sequence of the product.

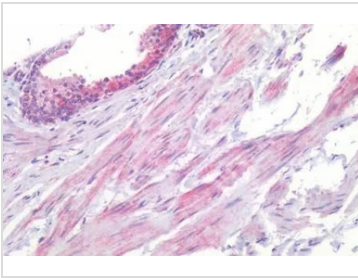


For full product information, images and publications, please visit our [website](#).

## DATA IMAGES

**GTX13154 IHC-P Image**

IHC-P analysis of human vascular smooth muscle tissue using GTX13154 5-HT1B receptor antibody.  
Antigen retrieval : Heat-induced antigen retrieval

**GTX13154 IHC-P Image**

IHC-P analysis of human vascular smooth muscle tissue using GTX13154 5-HT1B receptor antibody.



For full product information, images and publications, please visit our [website](#).