

COL9A3 antibody

Cat. No. GTX131602

Host	Rabbit
Clonality	Polyclonal
Isotype	IgG
Application	IHC-P
Reactivity	Mouse

Package
100 µl, 25 µl

APPLICATION

Application Note

*Optimal dilutions/concentrations should be determined by the researcher.

Suggested dilution	Recommended dilution
IHC-P	1:100-1:1000
Not tested in other applications.	

Calculated MW 64 kDa. ([Note](#))

PROPERTIES

Form	Liquid
Buffer	PBS, 20% Glycerol
Preservative	0.025% ProClin 300
Storage	Store as concentrated solution. Centrifuge briefly prior to opening vial. For short-term storage (1-2 weeks), store at 4°C. For long-term storage, aliquot and store at -20°C or below. Avoid multiple freeze-thaw cycles.
Concentration	1.55 mg/ml (Please refer to the vial label for the specific concentration.)
Immunogen	Recombinant protein encompassing a sequence within the center region of human COL9A3. The exact sequence is proprietary.
Purification	Purified by antigen-affinity chromatography.
Conjugation	Unconjugated

Note

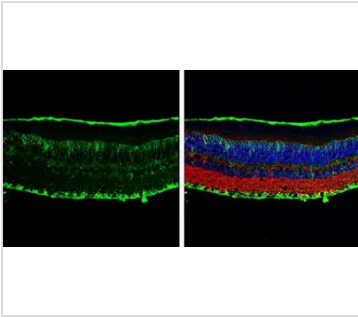
For laboratory research use only. Not for any clinical, therapeutic, or diagnostic use in humans or animals. Not for animal or human consumption.

Purchasers shall not, and agree not to enable third parties to, analyze, copy, reverse engineer or otherwise attempt to determine the structure or sequence of the product.



For full product information, images and publications, please visit our [website](#).

DATA IMAGES



GTX131602 IHC-P Image

COL9A3 antibody detects COL9A3 protein at cell membrane by immunohistochemical analysis.

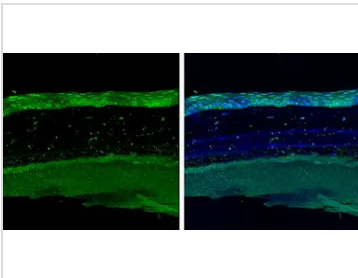
Sample: Paraffin-embedded mouse eye.

Green: COL9A3 stained by COL9A3 antibody (GTX131602) diluted at 1:500.

Red: beta Tubulin 3/ Tuj1, a cytoskeleton marker, stained by beta Tubulin 3/ Tuj1 antibody [GT1338] (GTX631831) diluted at 1:500.

Blue: Fluoroshield with DAPI (GTX30920).

Antigen Retrieval: Citrate buffer, pH 6.0, 15 min



GTX131602 IHC-P Image

COL9A3 antibody detects COL9A3 protein at cornea by immunohistochemical analysis.

Sample: Paraffin-embedded mouse eye.

Green: COL9A3 stained by COL9A3 antibody (GTX131602) diluted at 1:500.

Blue: Fluoroshield with DAPI (GTX30920).

Antigen Retrieval: Citrate buffer, pH 6.0, 15 min



For full product information, images and publications, please visit our [website](https://www.genetex.com).