

## GALNT3 antibody

Cat. No. GTX131628

Host	Rabbit
Clonality	Polyclonal
Isotype	IgG
Applications	WB, ICC/IF, IHC-P
Reactivity	Human, Mouse

Package  
100 µl, 25 µl

## Applications

## Application Note

\*Optimal dilutions/concentrations should be determined by the researcher.

Suggested dilution	Recommended dilution
WB	1:500-1:3000
ICC/IF	1:100-1:1000
IHC-P	Assay dependent

Not tested in other applications.

Calculated MW 73 kDa. ( [Note](#) )

## Properties

Form	Liquid
Buffer	PBS, 1% BSA, 20% Glycerol
Preservative	0.025% ProClin 300
Storage	Store as concentrated solution. Centrifuge briefly prior to opening vial. For short-term storage (1-2 weeks), store at 4°C. For long-term storage, aliquot and store at -20°C or below. Avoid multiple freeze-thaw cycles.
Concentration	0.31 mg/ml (Please refer to the vial label for the specific concentration.)
Immunogen	Recombinant protein encompassing a sequence within the N-terminus region of human GALNT3. The exact sequence is proprietary.
Purification	Purified by antigen-affinity chromatography.
Conjugation	Unconjugated

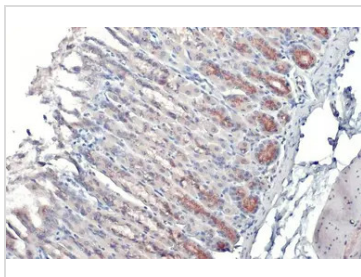
## Note

For laboratory research use only. Not for any clinical, therapeutic, or diagnostic use in humans or animals. Not for animal or human consumption.

Purchasers shall not, and agree not to enable third parties to, analyze, copy, reverse engineer or otherwise attempt to determine the structure or sequence of the product.



For full product information, images and publications, please visit our [website](#).

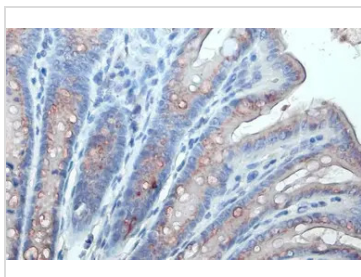
**DATA IMAGES**

**GTX131628 IHC-P Image**

GALNT3 antibody detects GALNT3 protein at Golgi apparatus by immunohistochemical analysis.

Sample: Paraffin-embedded mouse stomach.

GALNT3 stained by GALNT3 antibody (GTX131628) diluted at 1:500.

Antigen Retrieval: Citrate buffer, pH 6.0, 15 min

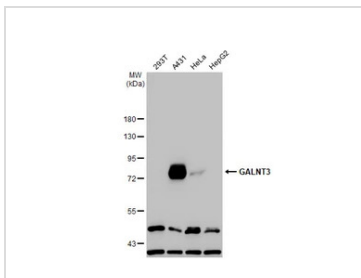

**GTX131628 IHC-P Image**

GALNT3 antibody detects GALNT3 protein at Golgi apparatus by immunohistochemical analysis.

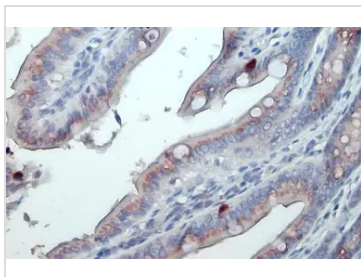
Sample: Paraffin-embedded mouse colon.

GALNT3 stained by GALNT3 antibody (GTX131628) diluted at 1:500.

Antigen Retrieval: Citrate buffer, pH 6.0, 15 min


**GTX131628 WB Image**

Various whole cell extracts (30 µg) were separated by 7.5% SDS-PAGE, and the membrane was blotted with GALNT3 antibody (GTX131628) diluted at 1:1000. The HRP-conjugated anti-rabbit IgG antibody (GTX213110-01) was used to detect the primary antibody.

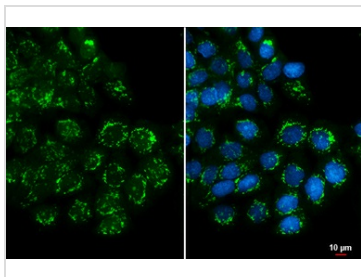

**GTX131628 IHC-P Image**

GALNT3 antibody detects GALNT3 protein at Golgi apparatus by immunohistochemical analysis.

Sample: Paraffin-embedded mouse colon.

GALNT3 stained by GALNT3 antibody (GTX131628) diluted at 1:500.

Antigen Retrieval: Citrate buffer, pH 6.0, 15 min


**GTX131628 ICC/IF Image**

GALNT3 antibody detects GALNT3 protein at Golgi apparatus by immunofluorescent analysis.

Sample: A431 cells were fixed in ice-cold MeOH for 5 min.

Green: GALNT3 stained by GALNT3 antibody (GTX131628) diluted at 1:500.

Blue: Hoechst 33342 staining.

Scale bar= 10 µm.



For full product information, images and publications, please visit our [website](http://www.genetex.com).