

CD44 antibody

Cat. No. GTX131669

Host	Rabbit
Clonality	Polyclonal
Isotype	IgG
Applications	WB, IP
Reactivity	Human, Mouse, Rat

References (2)

Package

100 µl, 25 µl

Applications

Application Note

*Optimal dilutions/concentrations should be determined by the researcher.

Suggested dilution	Recommended dilution
WB	1:500-1:3000
IP	Assay dependent

Not tested in other applications.

Calculated MW	82 kDa. (Note)
Product Note	IP/MS validation was supported by references (PMID:30377419)

Properties

Form	Liquid
Buffer	PBS, 20% Glycerol
Preservative	0.025% ProClin 300
Storage	Store as concentrated solution. Centrifuge briefly prior to opening vial. For short-term storage (1-2 weeks), store at 4°C. For long-term storage, aliquot and store at -20°C or below. Avoid multiple freeze-thaw cycles.
Concentration	0.1 mg/ml (Please refer to the vial label for the specific concentration.)
Immunogen	Recombinant protein encompassing a sequence within the Intracellular domain of human CD44. The exact sequence is proprietary.
Purification	Purified by antigen-affinity chromatography.
Conjugation	Unconjugated

Note

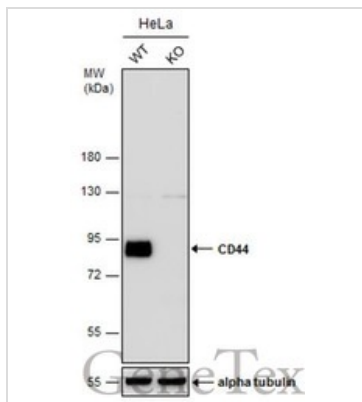
For laboratory research use only. Not for any clinical, therapeutic, or diagnostic use in humans or animals. Not for animal or human consumption.

Purchasers shall not, and agree not to enable third parties to, analyze, copy, reverse engineer or otherwise attempt to determine the structure or sequence of the product.



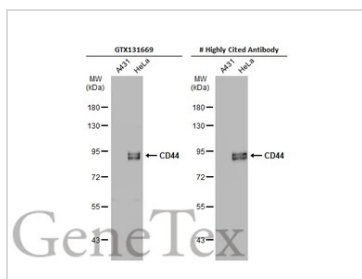
For full product information, images and publications, please visit our [website](#).

DATA IMAGES



GTX131669 WB Image

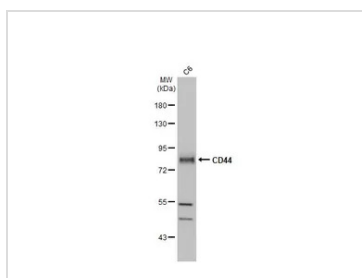
Wild-type (WT) and CD44 knockout (KO) HeLa cell extracts (30 µg) were separated by 7.5% SDS-PAGE, and the membrane was blotted with CD44 antibody (GTX131669) diluted at 1:1000.



GTX131669 WB Image

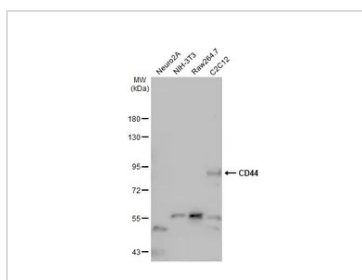
Various whole cell extracts (30 µg) were separated by 7.5% SDS-PAGE, and the membranes were blotted with CD44 antibody (GTX131669) diluted at 1:500 and competitor's antibody diluted at 1:500. The HRP-conjugated anti-rabbit IgG antibody (GTX213110-01) was used to detect the primary antibody.

*The competitor is not affiliated with GeneTex and does not endorse this product.



GTX131669 WB Image

Whole cell extract (30 µg) was separated by 7.5% SDS-PAGE, and the membrane was blotted with CD44 antibody (GTX131669) diluted at 1:1000. The HRP-conjugated anti-rabbit IgG antibody (GTX213110-01) was used to detect the primary antibody.



GTX131669 WB Image

Various whole cell extracts (30 µg) were separated by 7.5% SDS-PAGE, and the membrane was blotted with CD44 antibody (GTX131669) diluted at 1:1000. The HRP-conjugated anti-rabbit IgG antibody (GTX213110-01) was used to detect the primary antibody, and the signal was developed with Trident ECL plus-Enhanced.



For full product information, images and publications, please visit our [website](https://www.genetex.com).