

CD169 antibody

Cat. No. GTX131703

Host	Rabbit
Clonality	Polyclonal
Isotype	IgG
Applications	ICC/IF, IHC-P
Reactivity	Human, Mouse

References (2)

Package

100 µl, 25 µl

Applications

Application Note

*Optimal dilutions/concentrations should be determined by the researcher.

Suggested dilution	Recommended dilution
ICC/IF	Assay dependent
IHC-P	1:100-1:1000

Not tested in other applications.

Properties

Form	Liquid
Buffer	PBS, 20% Glycerol
Preservative	0.025% ProClin 300
Storage	Store as concentrated solution. Centrifuge briefly prior to opening vial. For short-term storage (1-2 weeks), store at 4°C. For long-term storage, aliquot and store at -20°C or below. Avoid multiple freeze-thaw cycles.
Concentration	1.21 mg/ml (Please refer to the vial label for the specific concentration.)
Immunogen	Recombinant protein encompassing a sequence within the Extracellular domain of human CD169. The exact sequence is proprietary.
Purification	Purified by antigen-affinity chromatography.
Conjugation	Unconjugated

Note

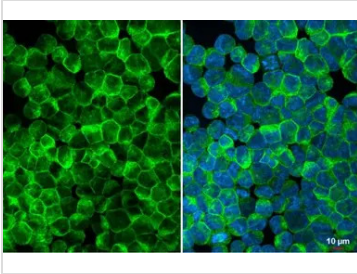
For laboratory research use only. Not for any clinical, therapeutic, or diagnostic use in humans or animals. Not for animal or human consumption.

Purchasers shall not, and agree not to enable third parties to, analyze, copy, reverse engineer or otherwise attempt to determine the structure or sequence of the product.



For full product information, images and publications, please visit our [website](#).

DATA IMAGES



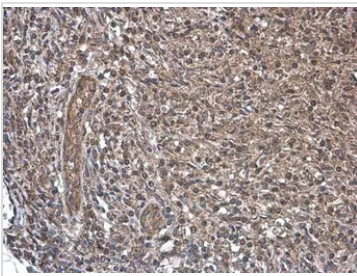
GTX131703 ICC/IF Image

CD169 antibody detects CD169 protein at cell membrane by immunofluorescent analysis.

Sample: K562 cells were fixed in 4% paraformaldehyde at RT for 15 min.

Green: CD169 stained by CD169 antibody (GTX131703) diluted at 1:500.

Blue: Fluoroshield with DAPI (GTX30920).



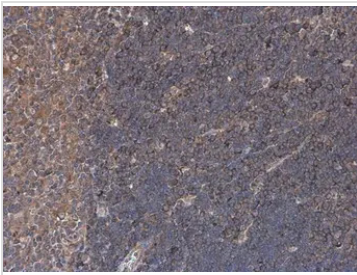
GTX131703 IHC-P Image

CD169 antibody detects CD169 protein at cytoplasm by immunohistochemical analysis.

Sample: Paraffin-embedded mouse lymph node.

CD169 stained by CD169 antibody (GTX131703) diluted at 1:500.

Antigen Retrieval: Citrate buffer, pH 6.0, 15 min



GTX131703 IHC-P Image

CD169 antibody detects CD169 protein at cell membrane by immunohistochemical analysis.

Sample: Paraffin-embedded mouse thymus gland.

CD169 stained by CD169 antibody (GTX131703) diluted at 1:500.

Antigen Retrieval: Citrate buffer, pH 6.0, 15 min



For full product information, images and publications, please visit our [website](https://www.genetex.com).