

## BASP1 antibody

Cat. No. GTX131728

Host	Rabbit
Clonality	Polyclonal
Isotype	IgG
Application	WB, IHC-P
Reactivity	Human, Mouse, Rat

Reference ( 1 )

★★★★★ Review ( 1 )

Package

100 µl, 25 µl

## APPLICATION

## Application Note

\*Optimal dilutions/concentrations should be determined by the researcher.

Suggested dilution	Recommended dilution
WB	1:500-1:3000
IHC-P	1:100-1:1000

Not tested in other applications.

Calculated MW 23 kDa. ( [Note](#) )

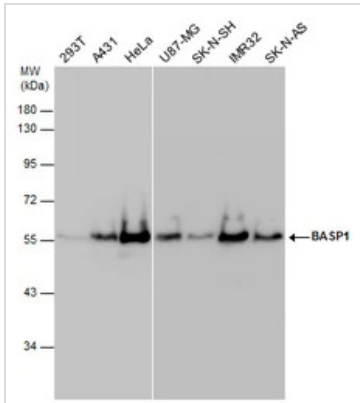
## PROPERTIES

Form	Liquid
Buffer	PBS, 20% Glycerol
Preservative	0.025% ProClin 300
Storage	Store as concentrated solution. Centrifuge briefly prior to opening vial. For short-term storage (1-2 weeks), store at 4°C. For long-term storage, aliquot and store at -20°C or below. Avoid multiple freeze-thaw cycles.
Concentration	1.27 mg/ml (Please refer to the vial label for the specific concentration.)
Immunogen	Recombinant protein encompassing a sequence within the N-terminus region of human BASP1. The exact sequence is proprietary.
Purification	Purified by antigen-affinity chromatography.
Conjugation	Unconjugated
Note	<p>For laboratory research use only. Not for any clinical, therapeutic, or diagnostic use in humans or animals. Not for animal or human consumption.</p> <p>Purchasers shall not, and agree not to enable third parties to, analyze, copy, reverse engineer or otherwise attempt to determine the structure or sequence of the product.</p>



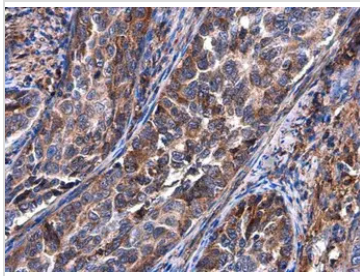
For full product information, images and publications, please visit our [website](#).

## DATA IMAGES



### GTKX131728 WB Image

BASP1 antibody detects BASP1 protein by western blot analysis. Various whole cell extracts (30 µg) were separated by 10% SDS-PAGE, and the membrane was blotted with BASP1 antibody (GTKX131728) diluted at 1:1000.



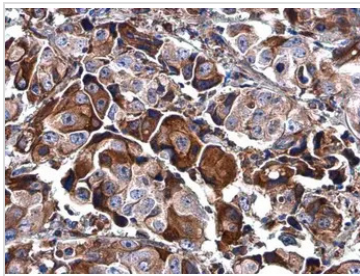
### GTKX131728 IHC-P Image

BASP1 antibody detects BASP1 protein at cytoplasm in human cervical carcinoma by immunohistochemical analysis.

Sample: Paraffin-embedded human cervical carcinoma.

BASP1 antibody (GTKX131728) diluted at 1:500.

Antigen Retrieval: Citrate buffer, pH 6.0, 15 min



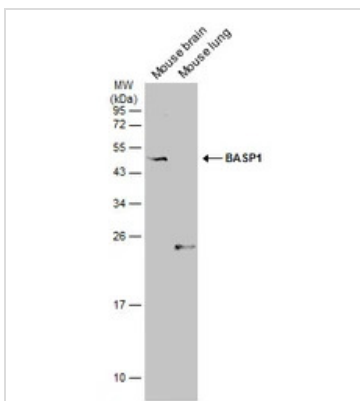
### GTKX131728 IHC-P Image

BASP1 antibody detects BASP1 protein at cytoplasm in human breast carcinoma by immunohistochemical analysis.

Sample: Paraffin-embedded human breast carcinoma.

BASP1 antibody (GTKX131728) diluted at 1:500.

Antigen Retrieval: Citrate buffer, pH 6.0, 15 min



### GTKX131728 WB Image

Mouse tissue extract (50 µg) were separated by 12% SDS-PAGE, and the membrane was blotted with BASP1 antibody (GTKX131728) diluted at 1:1000. The HRP-conjugated anti-rabbit IgG antibody (GTK213110-01) was used to detect the primary antibody, and the signal was developed with Trident ECL plus-Enhanced.



For full product information, images and publications, please visit our [website](https://www.genetex.com).