

# FSD1 antibody

**Cat. No. GTX131769**

<b>Host</b>	Rabbit
<b>Clonality</b>	Polyclonal
<b>Isotype</b>	IgG
<b>Application</b>	WB, ICC/IF, IHC-P, IHC
<b>Reactivity</b>	Human, Mouse

[Reference \( 1 \)](#)

**Package**

100 µl, 25 µl

## APPLICATION

### Application Note

\*Optimal dilutions/concentrations should be determined by the researcher.

Suggested dilution	Recommended dilution
WB	1:500-1:3000
ICC/IF	1:100-1:1000
IHC-P	1:100-1:1200
IHC	Assay dependent

Not tested in other applications.

**Calculated MW** 56 kDa. ( [Note](#) )

## PROPERTIES

<b>Form</b>	Liquid
<b>Buffer</b>	PBS, 20% Glycerol
<b>Preservative</b>	0.025% ProClin 300
<b>Storage</b>	Store as concentrated solution. Centrifuge briefly prior to opening vial. For short-term storage (1-2 weeks), store at 4°C. For long-term storage, aliquot and store at -20°C or below. Avoid multiple freeze-thaw cycles.
<b>Concentration</b>	0.91 mg/ml (Please refer to the vial label for the specific concentration.)
<b>Immunogen</b>	Recombinant protein encompassing a sequence within the center region of human FSD1. The exact sequence is proprietary.
<b>Purification</b>	Purified by antigen-affinity chromatography.
<b>Conjugation</b>	Unconjugated

### Note

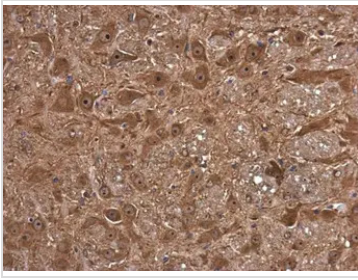
For laboratory research use only. Not for any clinical, therapeutic, or diagnostic use in humans or animals. Not for animal or human consumption.

Purchasers shall not, and agree not to enable third parties to, analyze, copy, reverse engineer or otherwise attempt to determine the structure or sequence of the product.



For full product information, images and publications, please visit our [website](#).

## DATA IMAGES



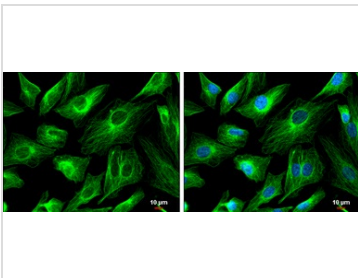
### GTX131769 IHC-P Image

FSD1 antibody detects FSD1 protein at cytoplasm and nucleus in mouse brain by immunohistochemical analysis.

Sample: Paraffin-embedded mouse brain.

FSD1 antibody (GTX131769) diluted at 1:1200.

Antigen Retrieval: Citrate buffer, pH 6.0, 15 min



### GTX131769 ICC/IF Image

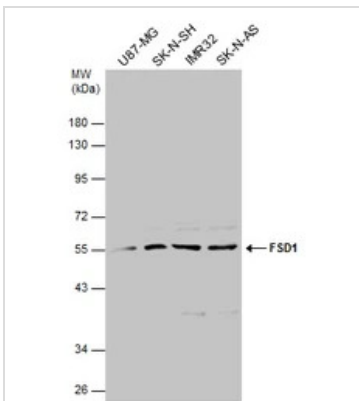
FSD1 antibody detects FSD1 protein at cytoskeleton by immunofluorescent analysis.

Sample: SK-N-SH cells were fixed in 4% paraformaldehyde at RT for 15 min.

Green: FSD1 protein stained by FSD1 antibody (GTX131769) diluted at 1:500.

Blue: Hoechst 33342 staining.

Scale bar = 10  $\mu$ m.



### GTX131769 WB Image

Various whole cell extracts (30  $\mu$ g) were separated by 10% SDS-PAGE, and the membrane was blotted with FSD1 antibody (GTX131769) diluted at 1:1000.



For full product information, images and publications, please visit our [website](#).