

## Japanese encephalitis virus prM antibody

**Cat. No. GTX131833**

|                     |                             |
|---------------------|-----------------------------|
| <b>Host</b>         | Rabbit                      |
| <b>Clonality</b>    | Polyclonal                  |
| <b>Isotype</b>      | IgG                         |
| <b>Applications</b> | WB, ICC/IF                  |
| <b>Reactivity</b>   | Japanese encephalitis virus |

References ( 4 )

Package

100 µl, 25 µl

## Applications

**Application Note**

\*Optimal dilutions/concentrations should be determined by the researcher.

| Suggested dilution | Recommended dilution |
|--------------------|----------------------|
| WB                 | 1:500-1:3000         |
| ICC/IF             | 1:100-1:1000         |

Not tested in other applications.

## Properties

|                      |  |
|----------------------|--|
| <b>Form</b>          | Liquid   |
| <b>Buffer</b>        | PBS, 1% BSA, 20% Glycerol  |
| <b>Preservative</b>  | 0.025% ProClin 300   |
| <b>Storage</b>       | Store as concentrated solution. Centrifuge briefly prior to opening vial. For short-term storage (1-2 weeks), store at 4°C. For long-term storage, aliquot and store at -20°C or below. Avoid multiple freeze-thaw cycles. |
| <b>Concentration</b> | 0.14 mg/ml (Please refer to the vial label for the specific concentration.)  |
| <b>Immunogen</b>     | Recombinant protein encompassing a sequence within the center region of prM protein (JEV). (Japanese Encephalitis Virus strain Jaoars982) The exact sequence is proprietary.   |
| <b>Purification</b>  | Purified by antigen-affinity chromatography.   |
| <b>Conjugation</b>   | Unconjugated   |

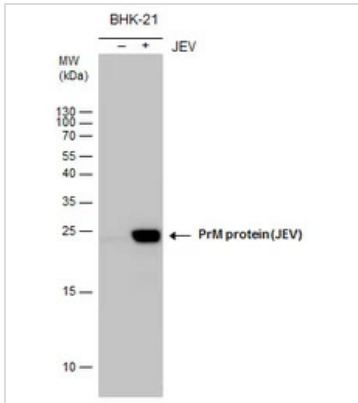
**Note**

For laboratory research use only. Not for any clinical, therapeutic, or diagnostic use in humans or animals. Not for animal or human consumption.

Purchasers shall not, and agree not to enable third parties to, analyze, copy, reverse engineer or otherwise attempt to determine the structure or sequence of the product.

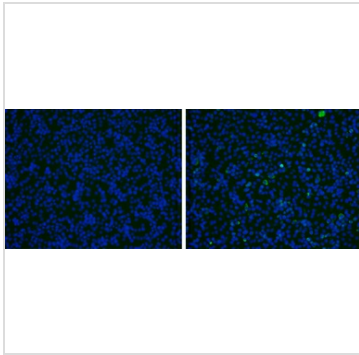
For full product information, images and publications, please visit our [website](#).

## DATA IMAGES



### GTX131833 WB Image

PrM protein (JEV) antibody detects PrM protein (JEV) protein by western blot analysis. Un-infected (-) and infected (+, JEV infection) BHK-21 whole cell extracts (20 µg) were separated by 15% SDS-PAGE, and the membrane was blotted with PrM protein (JEV) antibody (GTX131833) at a dilution of 1:1000.



### GTX131833 ICC/IF Image

prM protein (Japanese encephalitis virus) antibody detects prM protein (Japanese encephalitis virus) by immunofluorescence analysis.

Samples: BHK-21 cells mock (left) and infected with Japanese encephalitis virus (right) were fixed in methanol/acetone.

Green: prM protein (Japanese encephalitis virus) stained by prM protein (Japanese encephalitis virus) antibody (GTX131833) diluted at 1:1000.

Blue: Hoechst 33342 staining.



For full product information, images and publications, please visit our [website](https://www.genetex.com).