

Cav beta 2 antibody

Cat. No. GTX131906

Host	Rabbit
Clonality	Polyclonal
Isotype	IgG
Application	WB, IHC-Fr
Reactivity	Human, Mouse

Package
100 µl, 25 µl

APPLICATION

Application Note

*Optimal dilutions/concentrations should be determined by the researcher.

Suggested dilution	Recommended dilution
WB	1:500-1:3000
IHC-Fr	1:100-1:1000

Not tested in other applications.

Calculated MW 74 kDa. ([Note](#))

PROPERTIES

Form	Liquid
Buffer	PBS, 20% Glycerol
Preservative	0.025% ProClin 300
Storage	Store as concentrated solution. Centrifuge briefly prior to opening vial. For short-term storage (1-2 weeks), store at 4°C. For long-term storage, aliquot and store at -20°C or below. Avoid multiple freeze-thaw cycles.
Concentration	1.66 mg/ml (Please refer to the vial label for the specific concentration.)
Immunogen	Recombinant protein encompassing a sequence within the C-terminus region of human Cav beta 2. The exact sequence is proprietary.
Purification	Purified by antigen-affinity chromatography.
Conjugation	Unconjugated

Note

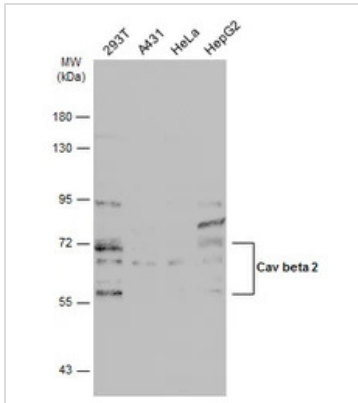
For laboratory research use only. Not for any clinical, therapeutic, or diagnostic use in humans or animals. Not for animal or human consumption.

Purchasers shall not, and agree not to enable third parties to, analyze, copy, reverse engineer or otherwise attempt to determine the structure or sequence of the product.



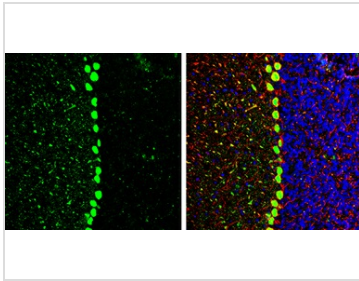
For full product information, images and publications, please visit our [website](#).

DATA IMAGES



GTX131906 WB Image

Various whole cell extracts (30 µg) was separated by 7.5% SDS-PAGE, and the membrane was blotted with Cav beta 2 antibody (GTX131906) diluted at 1:1000. The HRP-conjugated anti-rabbit IgG antibody (GTX213110-01) was used to detect the primary antibody.



GTX131906 IHC-Fr Image

Cav beta 2 antibody detects Cav beta 2 protein by immunohistochemical analysis.

Sample: Frozen-sectioned mouse cerebellum.

Green: Cav beta 2 stained by Cav beta 2 antibody (GTX131906) diluted at 1:250.

Red: NF-H, stained by NF-H antibody [GT114] (GTX634289) diluted at 1:500.

Blue: Fluoroshield with DAPI (GTX30920).

Antigen Retrieval: Citrate buffer, pH 6.0, 10 min



For full product information, images and publications, please visit our [website](https://www.genetex.com).