

PARP14 antibody

Cat. No. GTX131920

Host	Rabbit
Clonality	Polyclonal
Isotype	IgG
Applications	WB, ICC/IF, IHC-P, IP
Reactivity	Human

Package
100 µl, 25 µl

Applications

Application Note

*Optimal dilutions/concentrations should be determined by the researcher.

Suggested dilution	Recommended dilution
WB	1:500-1:3000
ICC/IF	Assay dependent
IHC-P	Assay dependent
IP	1:100-1:500

Not tested in other applications.

Calculated MW 203 kDa. ([Note](#))

Properties

Form	Liquid
Buffer	PBS, 20% Glycerol
Preservative	0.025% ProClin 300
Storage	Store as concentrated solution. Centrifuge briefly prior to opening vial. For short-term storage (1-2 weeks), store at 4°C. For long-term storage, aliquot and store at -20°C or below. Avoid multiple freeze-thaw cycles.
Concentration	1.11 mg/ml (Please refer to the vial label for the specific concentration.)
Immunogen	Recombinant protein encompassing a sequence within the C-terminus region of human PARP14. The exact sequence is proprietary.
Purification	Purified by antigen-affinity chromatography.
Conjugation	Unconjugated



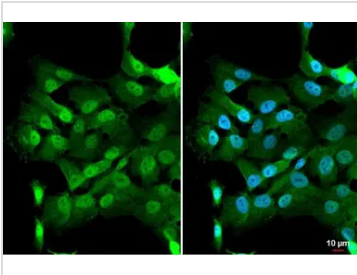
For full product information, images and publications, please visit our [website](#).

For laboratory research use only. Not for any clinical, therapeutic, or diagnostic use in humans or animals. Not for animal or human consumption.

Note

Purchasers shall not, and agree not to enable third parties to, analyze, copy, reverse engineer or otherwise attempt to determine the structure or sequence of the product.

DATA IMAGES



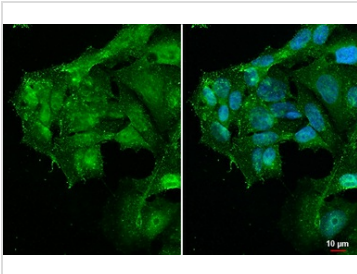
GTX131920 ICC/IF Image

PARP14 antibody detects PARP14 protein at cytoplasm and nucleus by immunofluorescent analysis.

Sample: SK-N-AS cells were fixed in 4% paraformaldehyde at RT for 15 min.

Green: PARP14 stained by PARP14 antibody (GTX131920) diluted at 1:500.

Blue: Fluoroshield with DAPI (GTX30920).



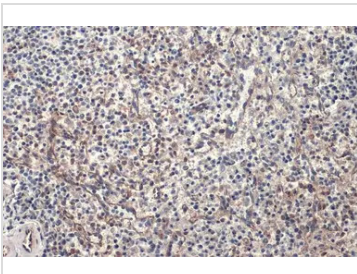
GTX131920 ICC/IF Image

PARP14 antibody detects PARP14 protein at cytoplasm and nucleus by immunofluorescent analysis.

Sample: HepG2 cells were fixed in 4% paraformaldehyde at RT for 15 min.

Green: PARP14 stained by PARP14 antibody (GTX131920) diluted at 1:500.

Blue: Fluoroshield with DAPI (GTX30920).



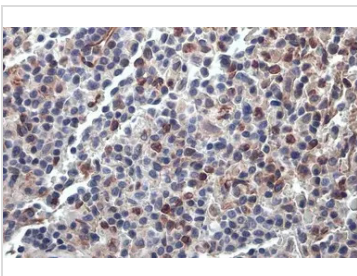
GTX131920 IHC-P Image

PARP14 antibody detects PARP14 protein at cell membrane and cytoplasm by immunohistochemical analysis.

Sample: Paraffin-embedded human spleen.

PARP14 stained by PARP14 antibody (GTX131920) diluted at 1:500.

Antigen Retrieval: Citrate buffer, pH 6.0, 15 min



GTX131920 IHC-P Image

PARP14 antibody detects PARP14 protein at cell membrane and cytoplasm by immunohistochemical analysis.

Sample: Paraffin-embedded human spleen.

PARP14 stained by PARP14 antibody (GTX131920) diluted at 1:500.

Antigen Retrieval: Citrate buffer, pH 6.0, 15 min



For full product information, images and publications, please visit our [website](https://www.genetex.com).