

Tet Repressor antibody

Cat. No. GTX131985

Host	Rabbit
Clonality	Polyclonal
Isotype	IgG
Application	WB, ELISA

Package
100 µl, 25 µl

APPLICATION

Application Note

*Optimal dilutions/concentrations should be determined by the researcher.

Suggested dilution	Recommended dilution
WB	Assay dependent
ELISA	Assay dependent

Not tested in other applications.

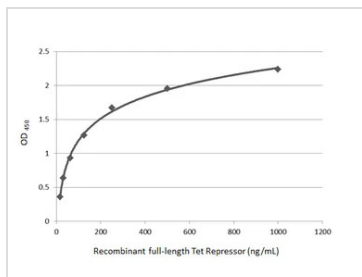
PROPERTIES

Form	Liquid
Buffer	PBS, 20% Glycerol
Preservative	0.025% ProClin 300
Storage	Store as concentrated solution. Centrifuge briefly prior to opening vial. For short-term storage (1-2 weeks), store at 4°C. For long-term storage, aliquot and store at -20°C or below. Avoid multiple freeze-thaw cycles.
Concentration	1.16 mg/ml (Please refer to the vial label for the specific concentration.)
Immunogen	Full length Tet Repressor recombinant protein.
Purification	Purified by antigen-affinity chromatography.
Conjugation	Unconjugated
Note	For In vitro laboratory use only. Not for any clinical, therapeutic, or diagnostic use in humans or animals. Not for animal or human consumption.



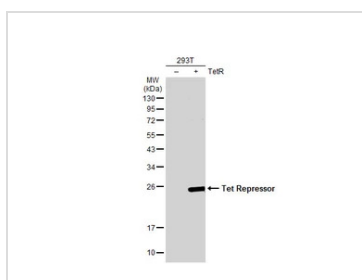
For full product information, images and publications, please visit our [website](#).

DATA IMAGES



GTx131985 ELISA Image

Indirect ELISA analysis performed by coating plate with recombinant full-length Tet Repressor (1000-15.63 ng/mL). Coated protein was probed with Tet Repressor antibody (GTx131985) (1 µg/mL). Rabbit IgG antibody (HRP) (GTx213110-01) (1:10000) was used to detect bound primary antibody.



GTx131985 WB Image

Non-transfected (-) and transfected (+) 293T whole cell extracts (30 µg) were separated by 12% SDS-PAGE, and the membrane was blotted with Tet Repressor antibody (GTx131985) diluted at 1:5000. The HRP-conjugated anti-rabbit IgG antibody (GTx213110-01) was used to detect the primary antibody.



For full product information, images and publications, please visit our [website](https://www.genetex.com).