

## Pyruvate Carboxylase antibody

Cat. No. GTX131987

Host	Rabbit
Clonality	Polyclonal
Isotype	IgG
Applications	WB, ICC/IF, IHC-P
Reactivity	Human, Mouse

Package  
100 µl, 25 µl

## Applications

## Application Note

\*Optimal dilutions/concentrations should be determined by the researcher.

Suggested dilution	Recommended dilution
WB	1:500-1:3000
ICC/IF	1:100-1:1000
IHC-P	1:100-1:1000

Not tested in other applications.

Calculated MW 130 kDa. ([Note](#))

## Properties

Form	Liquid
Buffer	PBS, 20% Glycerol
Preservative	0.025% ProClin 300
Storage	Store as concentrated solution. Centrifuge briefly prior to opening vial. For short-term storage (1-2 weeks), store at 4°C. For long-term storage, aliquot and store at -20°C or below. Avoid multiple freeze-thaw cycles.
Concentration	3.08 mg/ml (Please refer to the vial label for the specific concentration.)
Immunogen	Recombinant protein encompassing a sequence within the C-terminus region of human Pyruvate Carboxylase. The exact sequence is proprietary.
Purification	Purified by antigen-affinity chromatography.
Conjugation	Unconjugated

## Note

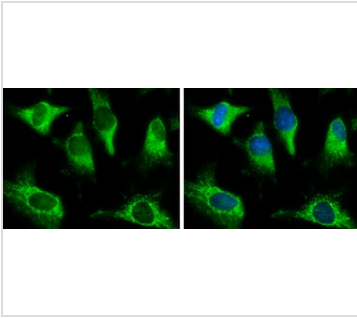
For laboratory research use only. Not for any clinical, therapeutic, or diagnostic use in humans or animals. Not for animal or human consumption.

Purchasers shall not, and agree not to enable third parties to, analyze, copy, reverse engineer or otherwise attempt to determine the structure or sequence of the product.



For full product information, images and publications, please visit our [website](#).

## DATA IMAGES



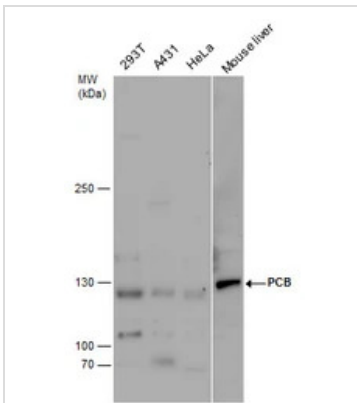
### GTX131987 ICC/IF Image

Pyruvate Carboxylase antibody detects Pyruvate Carboxylase protein at mitochondria by immunofluorescent analysis.

Sample: HeLa cells were fixed in ice-cold MeOH for 5 min.

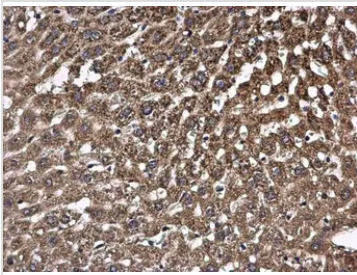
Green: Pyruvate Carboxylase protein stained by Pyruvate Carboxylase antibody (GTX131987) diluted at 1:500.

Blue: Hoechst 33342 staining.



### GTX131987 WB Image

PCB antibody detects PCB protein by western blot analysis. Various whole cell extracts (30 µg) and Mouse tissue extracts (50 µg) were separated by 5% SDS-PAGE, and the membrane was blotted with PCB antibody (GTX131987) diluted at a dilution of 1:1000.



### GTX131987 IHC-P Image

PCB antibody detects PCB protein at mitochondria and cytoplasm in mouse liver by immunohistochemical analysis.

Sample: Paraffin-embedded mouse liver.

PCB antibody (GTX131987) diluted at 1:500.

Antigen Retrieval: Citrate buffer, pH 6.0, 15 min



For full product information, images and publications, please visit our [website](https://www.genetex.com).