

Pyruvate Carboxylase antibody

Cat. No. GTX132002

Host	Rabbit
Clonality	Polyclonal
Isotype	IgG
Applications	WB, ICC/IF, IHC-P, IP, RIP
Reactivity	Human, Rat

References (3)

Package

100 µl, 25 µl

Applications

Application Note

*Optimal dilutions/concentrations should be determined by the researcher.

Suggested dilution	Recommended dilution
WB	1:500-1:3000
ICC/IF	1:100-1:1000
IHC-P	1:100-1:1000
IP	1:100-1:857
RIP	Assay dependent

Not tested in other applications.

Calculated MW 130 kDa. ([Note](#))

Properties

Form	Liquid
Buffer	PBS, 20% Glycerol
Preservative	0.025% ProClin 300
Storage	Store as concentrated solution. Centrifuge briefly prior to opening vial. For short-term storage (1-2 weeks), store at 4°C. For long-term storage, aliquot and store at -20°C or below. Avoid multiple freeze-thaw cycles.
Concentration	0.69 mg/ml (Please refer to the vial label for the specific concentration.)
Immunogen	Recombinant protein encompassing a sequence within the C-terminus region of human Pyruvate Carboxylase. The exact sequence is proprietary.
Purification	Purified by antigen-affinity chromatography.
Conjugation	Unconjugated



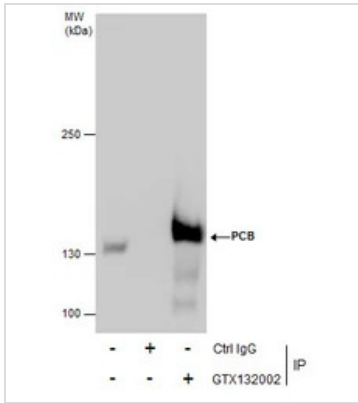
For full product information, images and publications, please visit our [website](#).

For laboratory research use only. Not for any clinical, therapeutic, or diagnostic use in humans or animals. Not for animal or human consumption.

Note

Purchasers shall not, and agree not to enable third parties to, analyze, copy, reverse engineer or otherwise attempt to determine the structure or sequence of the product.

DATA IMAGES

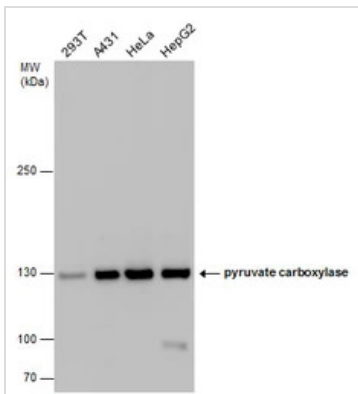


GTX132002 IP Image

Immunoprecipitation of PCB protein from HeLa whole cell extracts using 5 μ g of PCB antibody (GTX132002).

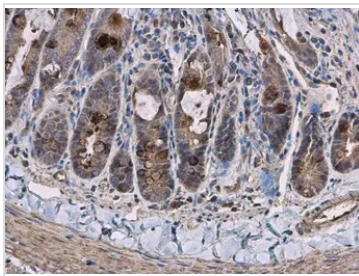
Western blot analysis was performed using PCB antibody (GTX132002) diluted at 1:1000.

EasyBlot anti-Rabbit IgG (GTX221666-01) was used as a secondary reagent.



GTX132002 WB Image

PCB antibody detects PCB protein by western blot analysis. Various whole cell extracts (30 μ g) were separated by 5% SDS-PAGE, and the membrane was blotted with PCB antibody (GTX132002) diluted at a dilution of 1:1000.



GTX132002 IHC-P Image

PCB antibody detects PCB protein at cytoplasm in rat duodenum by immunohistochemical analysis.

Sample: Paraffin-embedded rat duodenum.

PCB antibody (GTX132002) diluted at 1:500.

Antigen Retrieval: Citrate buffer, pH 6.0, 15 min



For full product information, images and publications, please visit our [website](https://www.genetex.com).