

Powassan virus prM protein antibody

Cat. No. GTX132055

| | |
|--------------|----------------|
| Host | Rabbit |
| Clonality | Polyclonal |
| Isotype | IgG |
| Applications | WB |
| Reactivity | Powassan virus |

References (2)

★★★★★ Review (1)

Package

100 µl, 25 µl

Applications

Application Note

*Optimal dilutions/concentrations should be determined by the researcher.

| Suggested dilution | Recommended dilution |
|--------------------|----------------------|
| WB | Assay dependent |

Not tested in other applications.

Properties

| | |
|---------------|--|
| Form | Liquid |
| Buffer | PBS, 20% Glycerol |
| Preservative | 0.025% ProClin 300 |
| Storage | Store as concentrated solution. Centrifuge briefly prior to opening vial. For short-term storage (1-2 weeks), store at 4°C. For long-term storage, aliquot and store at -20°C or below. Avoid multiple freeze-thaw cycles. |
| Concentration | 2.3 mg/ml (Please refer to the vial label for the specific concentration.) |
| Immunogen | Full length Powassan virus prM recombinant protein. (Powassan virus (strain DTV-SPO)) |
| Purification | Purified by antigen-affinity chromatography. |
| Conjugation | Unconjugated |

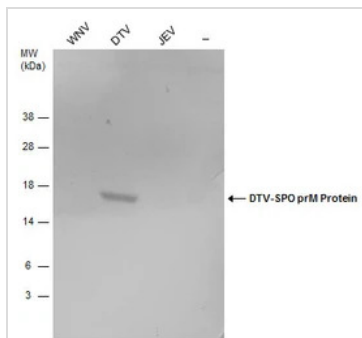
Note

For laboratory research use only. Not for any clinical, therapeutic, or diagnostic use in humans or animals. Not for animal or human consumption.

Purchasers shall not, and agree not to enable third parties to, analyze, copy, reverse engineer or otherwise attempt to determine the structure or sequence of the product.



For full product information, images and publications, please visit our [website](#).

DATA IMAGES

GTX132055 WB Image

Non-infected (–) and infected Vero whole cell extracts were separated by SDS-PAGE, and the membrane was blotted with Powassan virus PrM protein antibody (GTX132055).



For full product information, images and publications, please visit our [website](https://www.genetex.com).