

Dengue virus NS4A protein antibody

Cat. No. GTX132069

Host	Rabbit
Clonality	Polyclonal
Isotype	IgG
Applications	WB, ICC/IF, IHC-P
Reactivity	Dengue virus 2

References (4)

★★★★★ Review (1)

Package

100 µl, 25 µl

Applications

Application Note

*Optimal dilutions/concentrations should be determined by the researcher.

Suggested dilution	Recommended dilution
WB	1:500-1:3000
ICC/IF	1:100-1:1000
IHC-P	1:100-1:1000

Not tested in other applications.

Calculated MW 16 kDa. ([Note](#))

Properties

Form	Liquid
Buffer	PBS, 1% BSA, 20% Glycerol
Preservative	0.025% ProClin 300
Storage	Store as concentrated solution. Centrifuge briefly prior to opening vial. For short-term storage (1-2 weeks), store at 4°C. For long-term storage, aliquot and store at -20°C or below. Avoid multiple freeze-thaw cycles.
Concentration	0.12 mg/ml (Please refer to the vial label for the specific concentration.)
Immunogen	Full length Dengue virus NS4A recombinant protein. (Dengue virus 2 (strain 16681 PDK 53))
Purification	Purified by antigen-affinity chromatography.
Conjugation	Unconjugated

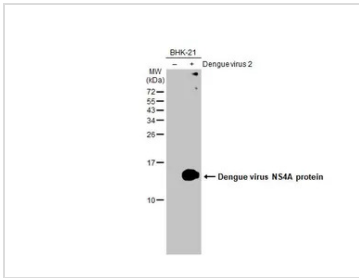
Note

For laboratory research use only. Not for any clinical, therapeutic, or diagnostic use in humans or animals. Not for animal or human consumption.

Purchasers shall not, and agree not to enable third parties to, analyze, copy, reverse engineer or otherwise attempt to determine the structure or sequence of the product.

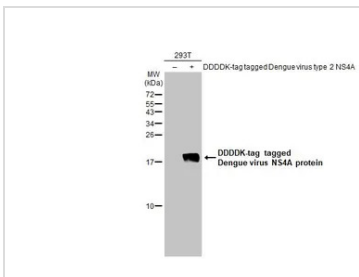
For full product information, images and publications, please visit our [website](#).

DATA IMAGES



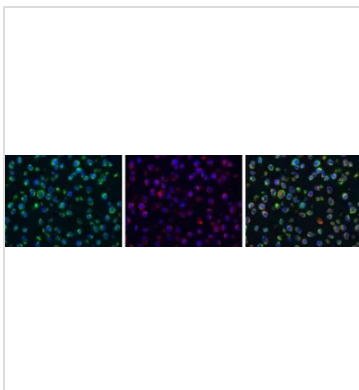
GTX132069 WB Image

Non-infected (-) and infected (+) BHK-21 whole cell extracts (30 µg) were separated by 15% SDS-PAGE, and the membrane was blotted with Dengue virus NS4A protein antibody (GTX132069) diluted at 1:1000. The HRP-conjugated anti-rabbit IgG antibody (GTX213110-01) was used to detect the primary antibody.



GTX132069 WB Image

Non-transfected (-) and transfected (+) 293T whole cell extracts (30 µg) were separated by 15% SDS-PAGE, and the membrane was blotted with Dengue virus NS4A protein antibody (GTX132069) diluted at 1:5000. The HRP-conjugated anti-rabbit IgG antibody (GTX213110-01) was used to detect the primary antibody.



GTX132069 IHC-P Image

Dengue virus NS4A protein antibody detects Dengue virus NS4A protein protein at cytoplasm by immunohistochemical analysis.

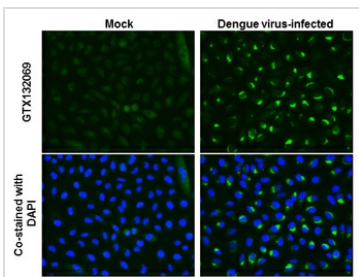
Sample: Paraffin-embedded BHK-21 infected with dengue virus.

Green: Dengue virus NS4A protein stained by Dengue virus NS4A protein antibody (GTX132069) diluted at 1:1000.

Red: alpha Tubulin, a cytoskeleton marker, stained by alpha Tubulin antibody [GT114] (GTX628802) diluted at 1:1000.

Blue: Fluoroshield with DAPI (GTX30920).

Antigen Retrieval: Citrate buffer, pH 6.0, 15 min



GTX132069 ICC/IF Image

Dengue virus NS4A protein antibody detects Dengue virus NS4A protein at cytoplasm by immunofluorescent analysis.

Sample: Mock and infected A549 cells were fixed in 4% paraformaldehyde at RT for 1 hr.

Green: Dengue virus NS4A protein stained by Dengue virus NS4A protein antibody (GTX132069) diluted at 1:720.

Blue: nuclear staining.



For full product information, images and publications, please visit our [website](#).