

PTGER4 / EP4 antibody

Cat. No. GTX13207

Host	Rabbit
Clonality	Polyclonal
Isotype	IgG
Application	IHC-P
Reactivity	Human, Bovine, Monkey

Package

25 µg

APPLICATION

Application Note

*Optimal dilutions/concentrations should be determined by the researcher.

Suggested dilution	Recommended dilution
IHC-P	2 - 3 µg/ml
Not tested in other applications.	

Calculated MW 53 kDa. ([Note](#))

PROPERTIES

Form	Liquid
Buffer	PBS
Preservative	0.1% Sodium azide
Storage	Store as concentrated solution. Centrifuge briefly prior to opening vial. For short-term storage (1-2 weeks), store at 4°C. For long-term storage, aliquot and store at -20°C or below. Avoid multiple freeze-thaw cycles.
Concentration	1 mg/ml (Please refer to the vial label for the specific concentration.)
Immunogen	Synthetic 15 amino acid peptide from C-terminus of human PTGER4 / EP4.
Purification	Purified by affinity chromatography
Conjugation	Unconjugated

Note

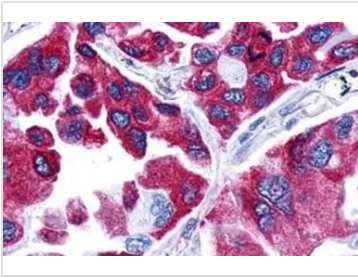
For laboratory research use only. Not for any clinical, therapeutic, or diagnostic use in humans or animals. Not for animal or human consumption.

Purchasers shall not, and agree not to enable third parties to, analyze, copy, reverse engineer or otherwise attempt to determine the structure or sequence of the product.



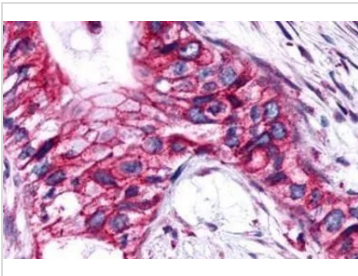
For full product information, images and publications, please visit our [website](#).

DATA IMAGES



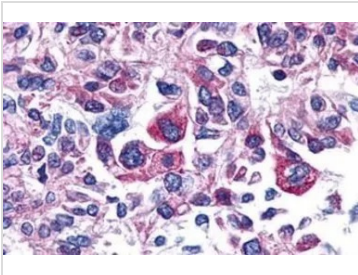
GTX13207 IHC-P Image

IHC-P analysis of human lung, adenocarcinoma tissue using GTX13207 PTGER4 / EP4 antibody.
Antigen retrieval : Heat-induced antigen retrieval



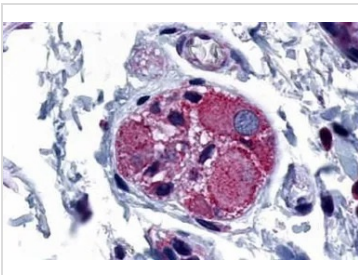
GTX13207 IHC-P Image

IHC-P analysis of human pancreas, carcinoma tissue using GTX13207 PTGER4 / EP4 antibody.
Antigen retrieval : Heat-induced antigen retrieval



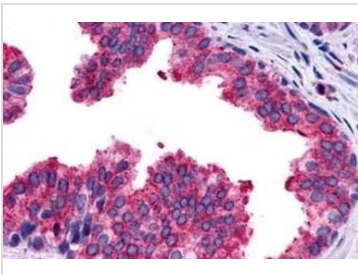
GTX13207 IHC-P Image

IHC-P analysis of human prostate, carcinoma tissue using GTX13207 PTGER4 / EP4 antibody.
Antigen retrieval : Heat-induced antigen retrieval



GTX13207 IHC-P Image

IHC-P analysis of human colon, ganglion tissue using GTX13207 PTGER4 / EP4 antibody.
Antigen retrieval : Heat-induced antigen retrieval



GTX13207 IHC-P Image

IHC-P analysis of human prostate, benign prostatic hyperplasia tissue using GTX13207 PTGER4 / EP4 antibody.
Antigen retrieval : Heat-induced antigen retrieval



For full product information, images and publications, please visit our [website](https://www.genetex.com).