

Beta-gal antibody

Cat. No. GTX132107

Host	Rabbit
Clonality	Polyclonal
Isotype	IgG
Application	WB, IHC
Reactivity	E. coli

★★★★★ Review (1)

Package
100 µl, 25 µl

APPLICATION

Application Note

*Optimal dilutions/concentrations should be determined by the researcher.

Suggested dilution	Recommended dilution
WB	1:5000-1:20000
IHC	Assay dependent

Not tested in other applications.

Calculated MW 116 kDa. ([Note](#))

PROPERTIES

Form	Liquid
Buffer	PBS, 1% BSA, 20% Glycerol
Preservative	0.025% ProClin 300
Storage	Store as concentrated solution. Centrifuge briefly prior to opening vial. For short-term storage (1-2 weeks), store at 4°C. For long-term storage, aliquot and store at -20°C or below. Avoid multiple freeze-thaw cycles.
Concentration	0.05 mg/ml (Please refer to the vial label for the specific concentration.)
Immunogen	The immunogen used to generate this antibody corresponds to E. Coli beta-gal.
Purification	Purified by antigen-affinity chromatography.
Conjugation	Unconjugated

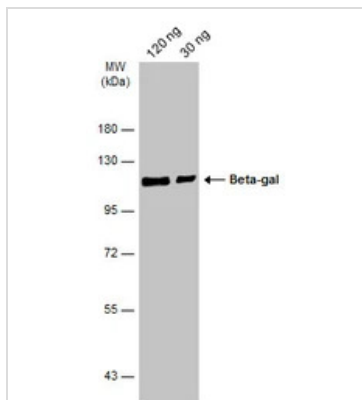
Note

For laboratory research use only. Not for any clinical, therapeutic, or diagnostic use in humans or animals. Not for animal or human consumption.

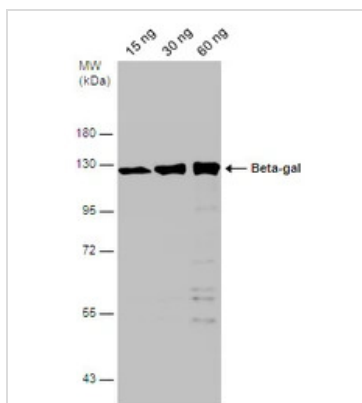
Purchasers shall not, and agree not to enable third parties to, analyze, copy, reverse engineer or otherwise attempt to determine the structure or sequence of the product.



For full product information, images and publications, please visit our [website](#).

DATA IMAGES

GTX132107 WB Image

Various amounts of beta galactosidase protein (120 ng | 30 ng μ g) were separated by 7.5% SDS-PAGE, and the membrane was blotted with Beta-gal antibody (GTX132107) diluted at 1:10000. The HRP-conjugated anti-rabbit IgG antibody (GTX213110-01) was used to detect the primary antibody.


GTX132107 WB Image

Various amounts of beta galactosidase protein were separated by 7.5% SDS-PAGE, and the membrane was blotted with Beta-gal antibody (GTX132107) diluted at 1:10000.



For full product information, images and publications, please visit our [website](https://www.genetex.com).