

## HMGA1 antibody

Cat. No. GTX132110

Host	Rabbit
Clonality	Polyclonal
Isotype	IgG
Application	WB, ICC/IF
Reactivity	Human

Reference ( 1 )

Package

100 µl, 25 µl

## APPLICATION

## Application Note

\*Optimal dilutions/concentrations should be determined by the researcher.

Suggested dilution	Recommended dilution
WB	1:500-1:3000
ICC/IF	1:100-1:1000

Not tested in other applications.

Calculated MW 12 kDa. ( [Note](#) )

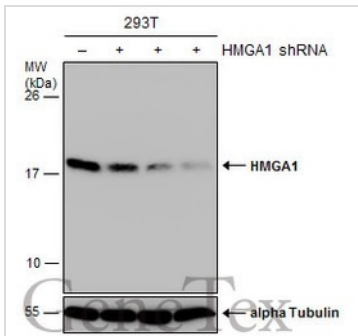
## PROPERTIES

Form	Liquid
Buffer	PBS, 20% Glycerol
Preservative	0.025% ProClin 300
Storage	Store as concentrated solution. Centrifuge briefly prior to opening vial. For short-term storage (1-2 weeks), store at 4°C. For long-term storage, aliquot and store at -20°C or below. Avoid multiple freeze-thaw cycles.
Concentration	0.87 mg/ml (Please refer to the vial label for the specific concentration.)
Immunogen	Recombinant protein encompassing a sequence within the N-terminus region of human HMGA1. The exact sequence is proprietary.
Purification	Purified by antigen-affinity chromatography.
Conjugation	Unconjugated
Note	<p>For laboratory research use only. Not for any clinical, therapeutic, or diagnostic use in humans or animals. Not for animal or human consumption.</p> <p>Purchasers shall not, and agree not to enable third parties to, analyze, copy, reverse engineer or otherwise attempt to determine the structure or sequence of the product.</p>



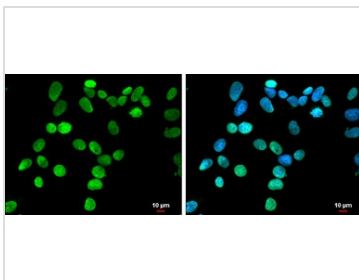
For full product information, images and publications, please visit our [website](#).

## DATA IMAGES



### GTX132110 WB Image

Non-transfected (-) and transfected (+) 293T whole cell extracts (30 µg) were separated by 15% SDS-PAGE, and the membrane was blotted with HMGA1 antibody (GTX132110) diluted at 1:3000.



### GTX132110 ICC/IF Image

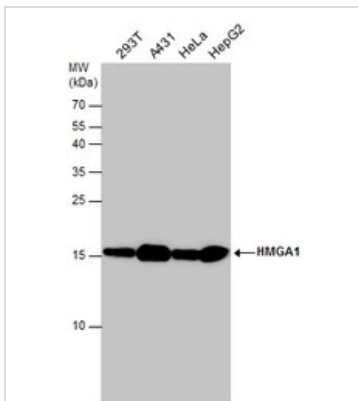
HMGA1 antibody detects HMGA1 protein at nucleus by immunofluorescent analysis.

Sample: MCF7 cells were fixed in 4% paraformaldehyde at RT for 15 min.

Green: HMGA1 protein stained by HMGA1 antibody (GTX132110) diluted at 1:500.

Blue: Hoechst 33342 staining.

Scale bar = 10 µm.



### GTX132110 WB Image

Various whole cell extracts (30 µg) were separated by 15% SDS-PAGE, and the membrane was blotted with HMGA1 antibody (GTX132110) diluted at 1:1000.



For full product information, images and publications, please visit our [website](https://www.genetex.com).