

BRG1 antibody

Cat. No. GTX132121

Host	Rabbit
Clonality	Polyclonal
Isotype	IgG
Applications	WB, ICC/IF
Reactivity	Human

Package
 100 µl, 25 µl

Applications

Application Note

*Optimal dilutions/concentrations should be determined by the researcher.

Suggested dilution	Recommended dilution
WB	1:500-1:3000
ICC/IF	1:100-1:1000

Not tested in other applications.

Calculated MW 185 kDa. ([Note](#))

Properties

Form Liquid

Buffer PBS, 20% Glycerol

Preservative 0.025% ProClin 300

Storage Store as concentrated solution. Centrifuge briefly prior to opening vial. For short-term storage (1-2 weeks), store at 4°C. For long-term storage, aliquot and store at -20°C or below. Avoid multiple freeze-thaw cycles.

Concentration 0.82 mg/ml (Please refer to the vial label for the specific concentration.)

Immunogen Recombinant protein encompassing a sequence within the N-terminus region of human BRG1. The exact sequence is proprietary.

Purification Purified by antigen-affinity chromatography.

Conjugation Unconjugated

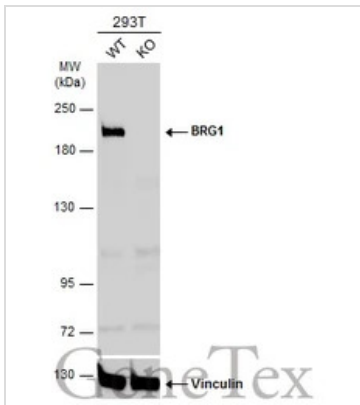
Note For laboratory research use only. Not for any clinical, therapeutic, or diagnostic use in humans or animals. Not for animal or human consumption.

Purchasers shall not, and agree not to enable third parties to, analyze, copy, reverse engineer or otherwise attempt to determine the structure or sequence of the product.



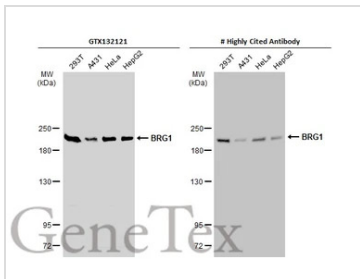
For full product information, images and publications, please visit our [website](#).

DATA IMAGES



GTX132121 WB Image

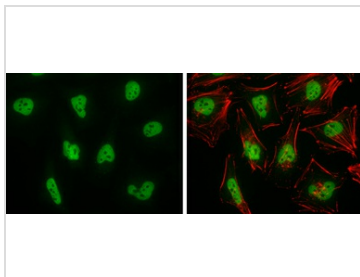
Wild-type (WT) and BRG1 knockout (KO) 293T cell extracts (30 µg) were separated by 5% SDS-PAGE, and the membrane was blotted with BRG1 antibody (GTX132121) diluted at 1:2000. The HRP-conjugated anti-rabbit IgG antibody (GTX213110-01) was used to detect the primary antibody.



GTX132121 WB Image

Various whole cell extracts (30 µg) were separated by 5% SDS-PAGE, and the membrane was blotted with BRG1 antibody (GTX132121) diluted at 1:1000. The HRP-conjugated anti-rabbit IgG antibody (GTX213110-01) was used to detect the primary antibody.

*The competitor is not affiliated with GeneTex and does not endorse this product.



GTX132121 ICC/IF Image

BRG1 antibody detects BRG1 protein at nucleus by immunofluorescent analysis. Sample: HeLa cells were fixed in 4% paraformaldehyde at RT for 15 min. Green: BRG1 protein stained by BRG1 antibody (GTX132121) diluted at 1:1000. Red: Phalloidin, a cytoskeleton marker, diluted at 1:100.



For full product information, images and publications, please visit our [website](#).