

Rad17 (phospho Ser656) antibody

Cat. No. GTX132150

Host	Rabbit
Clonality	Polyclonal
Isotype	IgG
Applications	WB, ICC/IF, IHC-P
Reactivity	Human

Package
100 µl, 25 µl

Applications

Application Note

*Optimal dilutions/concentrations should be determined by the researcher.

Suggested dilution	Recommended dilution
WB	1:500-1:3000
ICC/IF	1:100-1:1000
IHC-P	1:100-1:1000

Not tested in other applications.

Calculated MW 77 kDa. ([Note](#))

Properties

Form	Liquid
Buffer	PBS, 1% BSA, 20% Glycerol
Preservative	0.025% ProClin 300
Storage	Store as concentrated solution. Centrifuge briefly prior to opening vial. For short-term storage (1-2 weeks), store at 4°C. For long-term storage, aliquot and store at -20°C or below. Avoid multiple freeze-thaw cycles.
Concentration	2.25 mg/ml (Please refer to the vial label for the specific concentration.)
Immunogen	Carrier-protein conjugated synthetic peptide surrounding phospho Ser656 of human Rad17. The exact sequence is proprietary.
Purification	Purified by antigen-affinity chromatography.
Conjugation	Unconjugated

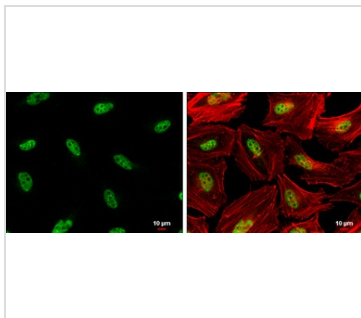
Note For laboratory research use only. Not for any clinical, therapeutic, or diagnostic use in humans or animals. Not for animal or human consumption.

Purchasers shall not, and agree not to enable third parties to, analyze, copy, reverse engineer or otherwise attempt to determine the structure or sequence of the product.



For full product information, images and publications, please visit our [website](#).

DATA IMAGES

**GTX132150 ICC/IF Image**

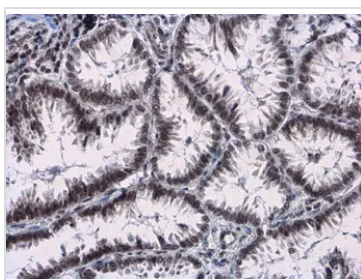
Rad17 (phospho Ser656) antibody detects Rad17 (phospho Ser656) protein at nucleus by immunofluorescent analysis.

Sample: HeLa cells were fixed in 4% paraformaldehyde at RT for 15 min.

Green: Rad17 (phospho Ser656) protein stained by Rad17 (phospho Ser656) antibody (GTX132150) diluted at 1:500.

Red: phalloidin, a cytoskeleton marker, diluted at 1:200.

Scale bar = 10 μ m.

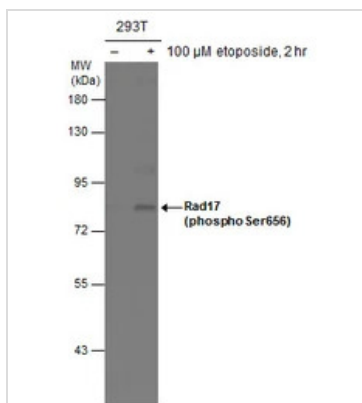
**GTX132150 IHC-P Image**

Rad17 (phospho Ser656) antibody detects Rad17 (phospho Ser656) protein at nucleus in human lung cancer by immunohistochemical analysis.

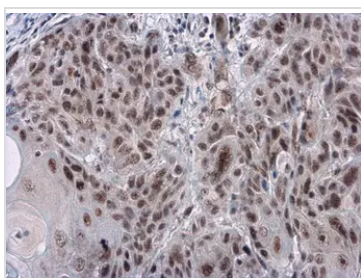
Sample: Paraffin-embedded human lung cancer.

Rad17 (phospho Ser656) antibody (GTX132150) diluted at 1:500.

Antigen Retrieval: Citrate buffer, pH 6.0, 15 min

**GTX132150 WB Image**

Untreated (-) and treated (+) 293T whole cell extracts (50 μ g) were separated by 7.5% SDS-PAGE, and the membrane was blotted with Rad17 (phospho Ser656) antibody (GTX132150) diluted at 1:500.

**GTX132150 IHC-P Image**

Rad17 (phospho Ser656) antibody detects Rad17 (phospho Ser656) protein at nucleus in human oral carcinoma by immunohistochemical analysis.

Sample: Paraffin-embedded human oral carcinoma.

Rad17 (phospho Ser656) antibody (GTX132150) diluted at 1:500.

Antigen Retrieval: Citrate buffer, pH 6.0, 15 min



For full product information, images and publications, please visit our [website](http://www.genetex.com).