

Paxillin (phospho Tyr31) antibody

Cat. No. GTX132154

Host	Rabbit
Clonality	Polyclonal
Isotype	IgG
Applications	WB, ICC/IF
Reactivity	Human, Mouse

References (1)

 Review (1)

Package

100 µl, 25 µl

Applications

Application Note

*Optimal dilutions/concentrations should be determined by the researcher.

Suggested dilution	Recommended dilution
WB	1:500-1:3000
ICC/IF	Assay dependent

Not tested in other applications.

Calculated MW 65 kDa. ([Note](#))

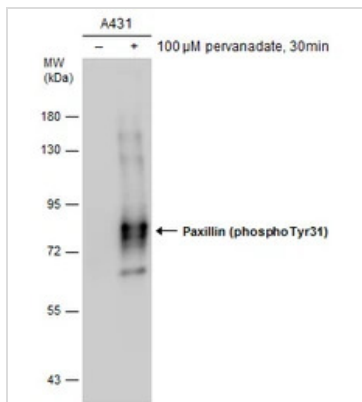
Properties

Form	Liquid
Buffer	PBS, 1% BSA, 20% Glycerol
Preservative	0.025% ProClin 300
Storage	Store as concentrated solution. Centrifuge briefly prior to opening vial. For short-term storage (1-2 weeks), store at 4°C. For long-term storage, aliquot and store at -20°C or below. Avoid multiple freeze-thaw cycles.
Concentration	0.77 mg/ml (Please refer to the vial label for the specific concentration.)
Immunogen	Carrier-protein conjugated synthetic peptide surrounding phospho Tyr31 of human Paxillin. The exact sequence is proprietary.
Purification	Purified by antigen-affinity chromatography.
Conjugation	Unconjugated
Note	For laboratory research use only. Not for any clinical, therapeutic, or diagnostic use in humans or animals. Not for animal or human consumption. Purchasers shall not, and agree not to enable third parties to, analyze, copy, reverse engineer or otherwise attempt to determine the structure or sequence of the product.



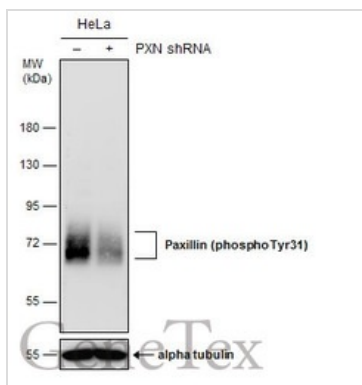
For full product information, images and publications, please visit our [website](#).

DATA IMAGES



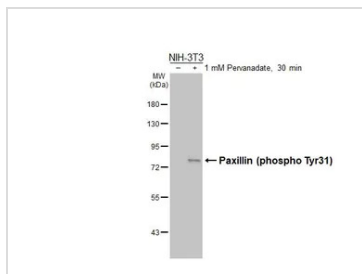
GTX132154 WB Image

Untreated (-) and treated (+) A431 whole cell extracts (5 μg) were separated by 7.5% SDS-PAGE, and the membrane was blotted with Paxillin (phospho Tyr31) antibody (GTX132154) diluted at 1:1000.



GTX132154 WB Image

Non-transfected (-) and transfected (+) HeLa whole cell extracts (50 μg) were separated by 7.5% SDS-PAGE, and the membrane was blotted with Paxillin (phospho Tyr31) antibody (GTX132154) diluted at 1:2000.



GTX132154 WB Image

Untreated (-) and treated (+) NIH-3T3 whole cell extracts (30 μg) were separated by 7.5% SDS-PAGE, and the membrane was blotted with Paxillin (phospho Tyr31) antibody (GTX132154) diluted at 1:1000. The HRP-conjugated anti-rabbit IgG antibody (GTX213110-01) was used to detect the primary antibody.



For full product information, images and publications, please visit our [website](http://www.genetex.com).