

Raptor antibody

Cat. No. GTX132303

Host	Rabbit
Clonality	Polyclonal
Isotype	IgG
Applications	WB, IHC-P, IP
Reactivity	Human, Rat

References (1)

Package

100 µl, 25 µl

Applications

Application Note

*Optimal dilutions/concentrations should be determined by the researcher.

Suggested dilution	Recommended dilution
WB	1:500-1:3000
IHC-P	1:100-1:1500
IP	1:100-1:500

Not tested in other applications.

Calculated MW 149 kDa. ([Note](#))

Properties

Form	Liquid
Buffer	PBS, 20% Glycerol
Preservative	0.025% ProClin 300
Storage	Store as concentrated solution. Centrifuge briefly prior to opening vial. For short-term storage (1-2 weeks), store at 4°C. For long-term storage, aliquot and store at -20°C or below. Avoid multiple freeze-thaw cycles.
Concentration	0.56 mg/ml (Please refer to the vial label for the specific concentration.)
Immunogen	Carrier-protein conjugated synthetic peptide encompassing a sequence within the N-terminus region of human Raptor. The exact sequence is proprietary.
Purification	Purified by antigen-affinity chromatography.
Conjugation	Unconjugated

Note

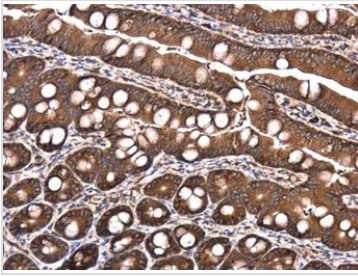
For laboratory research use only. Not for any clinical, therapeutic, or diagnostic use in humans or animals. Not for animal or human consumption.

Purchasers shall not, and agree not to enable third parties to, analyze, copy, reverse engineer or otherwise attempt to determine the structure or sequence of the product.



For full product information, images and publications, please visit our [website](#).

DATA IMAGES



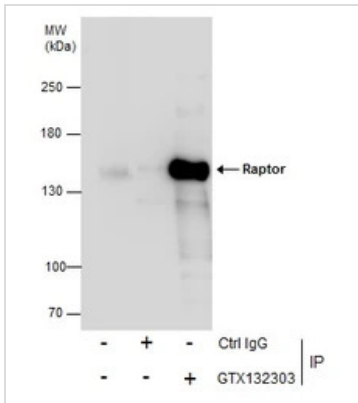
GTX132303 IHC-P Image

Raptor antibody detects Raptor protein at cytoplasm in rat intestine by immunohistochemical analysis.

Sample: Paraffin-embedded rat intestine.

Raptor antibody (GTX132303) diluted at 1:1500.

Antigen Retrieval: Citrate buffer, pH 6.0, 15 min

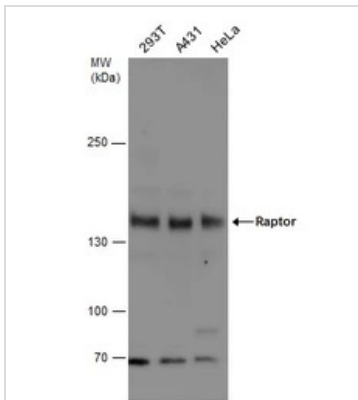


GTX132303 IP Image

Immunoprecipitation of Raptor protein from 293T whole cell extracts using 5 µg of Raptor antibody (GTX132303).

Western blot analysis was performed using Raptor antibody (GTX132303) diluted at 1:500.

EasyBlot anti-Rabbit IgG (GTX221666-01) was used as a secondary reagent.



GTX132303 WB Image

Various whole cell extracts (30 µg) were separated by 5% SDS-PAGE, and the membrane was blotted with Raptor antibody (GTX132303) diluted at 1:1000.



For full product information, images and publications, please visit our [website](https://www.genetex.com).