

Enterovirus D68 VP1 antibody

Cat. No. GTX132312

Host	Rabbit
Clonality	Polyclonal
Isotype	IgG
Applications	WB
Reactivity	Enterovirus D68

References (6)

Package

100 µl, 25 µl

Applications

Application Note

*Optimal dilutions/concentrations should be determined by the researcher.

Suggested dilution	Recommended dilution
WB	1:500-1:3000

Not tested in other applications.

Product Note

This antibody was raised against Enterovirus D68 VP1, and it does not cross-react with Enterovirus 71 C2 or Coxsackievirus A6 VP1.

Properties

Form	Liquid
Buffer	PBS, 20% Glycerol
Preservative	0.025% ProClin 300
Storage	Store as concentrated solution. Centrifuge briefly prior to opening vial. For short-term storage (1-2 weeks), store at 4°C. For long-term storage, aliquot and store at -20°C or below. Avoid multiple freeze-thaw cycles.
Concentration	1 mg/ml (Please refer to the vial label for the specific concentration.)
Immunogen	Recombinant fragment of enterovirus D68 VP1. (Strain: 37-99)
Purification	Purified by antigen-affinity chromatography.
Conjugation	Unconjugated

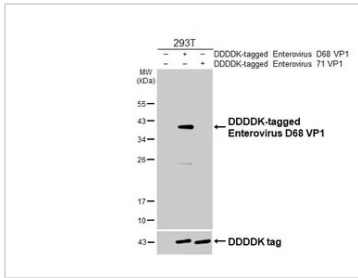
Note

For laboratory research use only. Not for any clinical, therapeutic, or diagnostic use in humans or animals. Not for animal or human consumption.

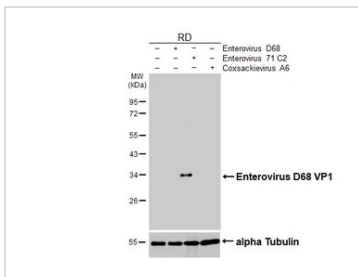
Purchasers shall not, and agree not to enable third parties to, analyze, copy, reverse engineer or otherwise attempt to determine the structure or sequence of the product.



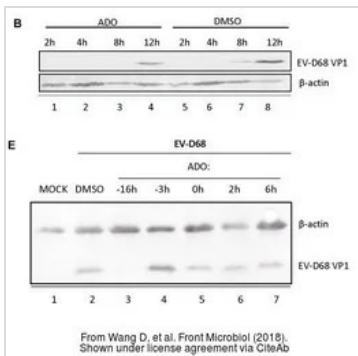
For full product information, images and publications, please visit our [website](#).

DATA IMAGES

GTX132312 WB Image

Non-transfected (–) and transfected (+) 293T whole cell extracts (30 µg) were separated by 12% SDS-PAGE, and the membrane was blotted with Enterovirus D68 VP1 antibody (GTX132312) diluted at 1:5000. The HRP-conjugated anti-rabbit IgG antibody (GTX213110-01) was used to detect the primary antibody.


GTX132312 WB Image

Non-infected (–) and infected (+) RD whole cell extracts (5 µg) were separated by 12% SDS-PAGE, and the membrane was blotted with Enterovirus D68 VP1 antibody (GTX132312) diluted at 1:1000. The HRP-conjugated anti-rabbit IgG antibody (GTX213110-01) was used to detect the primary antibody.


GTX132312 WB Image

The data was published in the journal Front Microbiol in 2018. [PMID: 30349523](https://pubmed.ncbi.nlm.nih.gov/30349523/)



For full product information, images and publications, please visit our [website](https://www.genetex.com).