

## FAK (phospho Tyr407) antibody

**Cat. No. GTX132320**

<b>Host</b>	Rabbit
<b>Clonality</b>	Polyclonal
<b>Isotype</b>	IgG
<b>Applications</b>	WB, ICC/IF
<b>Reactivity</b>	Human, Mouse, Rat

 Review ( 1 )

**Package**  
 100 µl, 25 µl

## Applications

**Application Note**

\*Optimal dilutions/concentrations should be determined by the researcher.

Suggested dilution	Recommended dilution
WB	1:500-1:3000
ICC/IF	1:100-1:1000

Not tested in other applications.

**Calculated MW** 119 kDa. ([Note](#))

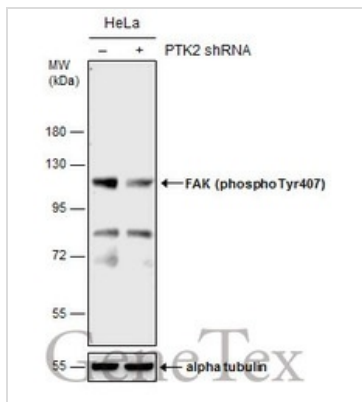
## Properties

<b>Form</b>	Liquid
<b>Buffer</b>	PBS, 1% BSA, 20% Glycerol
<b>Preservative</b>	0.025% ProClin 300
<b>Storage</b>	Store as concentrated solution. Centrifuge briefly prior to opening vial. For short-term storage (1-2 weeks), store at 4°C. For long-term storage, aliquot and store at -20°C or below. Avoid multiple freeze-thaw cycles.
<b>Concentration</b>	1 mg/ml (Please refer to the vial label for the specific concentration.)
<b>Immunogen</b>	Carrier-protein conjugated synthetic peptide surrounding phospho Tyr407 of human FAK. The exact sequence is proprietary.
<b>Purification</b>	Purified by antigen-affinity chromatography.
<b>Conjugation</b>	Unconjugated
<b>Note</b>	For laboratory research use only. Not for any clinical, therapeutic, or diagnostic use in humans or animals. Not for animal or human consumption.  Purchasers shall not, and agree not to enable third parties to, analyze, copy, reverse engineer or otherwise attempt to determine the structure or sequence of the product.

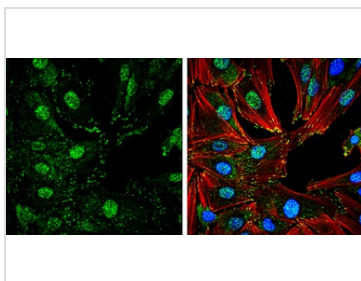


For full product information, images and publications, please visit our [website](#).

## DATA IMAGES

**GTX132320 WB Image**

Non-transfected (-) and transfected (+) HeLa whole cell extracts (50 µg) were separated by 7.5% SDS-PAGE, and the membrane was blotted with FAK (phospho Tyr407) antibody (GTX132320) diluted at 1:500.

**GTX132320 ICC/IF Image**

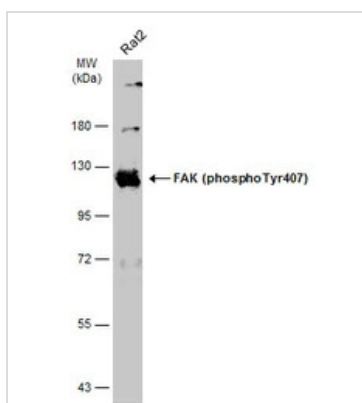
FAK (phospho Tyr407) antibody detects FAK (phospho Tyr407) protein at focal adhesion and nucleus by immunofluorescent analysis.

Sample: SK-N-SH cells were fixed in 4% paraformaldehyde at RT for 15 min.

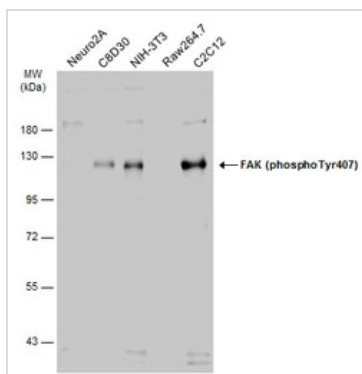
Green: FAK (phospho Tyr407) stained by FAK (phospho Tyr407) antibody (GTX132320) diluted at 1:500.

Red: phalloidin, a cytoskeleton marker, diluted at 1:100.

Blue: Hoechst 33342 staining.

**GTX132320 WB Image**

Whole cell extract (30 µg) was separated by 7.5% SDS-PAGE, and the membrane was blotted with FAK (phospho Tyr407) antibody (GTX132320) diluted at 1:1000. The HRP-conjugated anti-rabbit IgG antibody (GTX213110-01) was used to detect the primary antibody.

**GTX132320 WB Image**

Various whole cell extracts (30 µg) were separated by 7.5% SDS-PAGE, and the membrane was blotted with FAK (phospho Tyr407) antibody (GTX132320) diluted at 1:1000. The HRP-conjugated anti-rabbit IgG antibody (GTX213110-01) was used to detect the primary antibody.



For full product information, images and publications, please visit our [website](http://www.genetex.com).