

Enterovirus 71 3AB antibody

Cat. No. GTX132344

Host	Rabbit
Clonality	Polyclonal
Isotype	IgG
Applications	WB, IHC-P
Reactivity	Enterovirus 71

References (5)

Package

100 µl, 25 µl

Applications

Application Note

*Optimal dilutions/concentrations should be determined by the researcher.

Suggested dilution	Recommended dilution
WB	1:1000-1:10000
IHC-P	1:100-1:1000

Not tested in other applications.

Properties

Form	Liquid
Buffer	PBS, 20% Glycerol
Preservative	0.025% ProClin 300
Storage	Store as concentrated solution. Centrifuge briefly prior to opening vial. For short-term storage (1-2 weeks), store at 4°C. For long-term storage, aliquot and store at -20°C or below. Avoid multiple freeze-thaw cycles.
Concentration	1 mg/ml (Please refer to the vial label for the specific concentration.)
Immunogen	Synthetic peptide of Enterovirus 71 3AB (EV71 virus (strain USA/BrCr/1970)).
Purification	Purified by antigen-affinity chromatography.
Conjugation	Unconjugated

Note

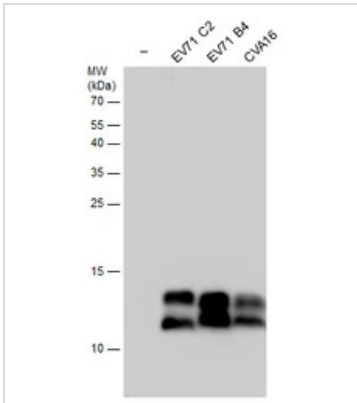
For laboratory research use only. Not for any clinical, therapeutic, or diagnostic use in humans or animals. Not for animal or human consumption.

Purchasers shall not, and agree not to enable third parties to, analyze, copy, reverse engineer or otherwise attempt to determine the structure or sequence of the product.



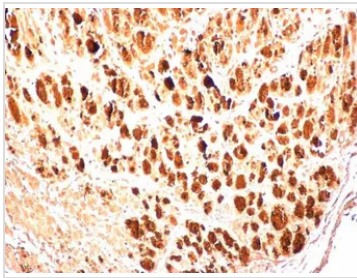
For full product information, images and publications, please visit our [website](#).

DATA IMAGES



GTx132344 WB Image

Non-infected (–) and infected RD whole cell extracts (30 µg) were separated by 15% SDS-PAGE, and the membrane was blotted with Enterovirus 71 3AB antibody (GTx132344) diluted at 1:5000.



GTx132344 IHC-P Image

EV71 3AB antibody detects EV71 3AB protein in EV71 infected mouse skeletal muscle by immunohistochemical analysis. Sample: Paraffin-embedded EV71 infected mouse skeletal muscle. EV71 3AB antibody [GTx132344] diluted at 1:500
Antigen Retrieval: Citrate buffer



For full product information, images and publications, please visit our [website](https://www.genetex.com).