

PI3 kinase p150 antibody

Cat. No. GTX132466

Host	Rabbit
Clonality	Polyclonal
Isotype	IgG
Application	WB, IHC-P, IP
Reactivity	Human, Mouse

Package
100 µl, 25 µl

APPLICATION

Application Note

*Optimal dilutions/concentrations should be determined by the researcher.

Suggested dilution	Recommended dilution
WB	1:500-1:3000
IHC-P	1:100-1:1000
IP	1:100-1:500

Not tested in other applications.

Calculated MW 153 kDa. ([Note](#))

PROPERTIES

Form	Liquid
Buffer	PBS, 20% Glycerol
Preservative	0.025% ProClin 300
Storage	Store as concentrated solution. Centrifuge briefly prior to opening vial. For short-term storage (1-2 weeks), store at 4°C. For long-term storage, aliquot and store at -20°C or below. Avoid multiple freeze-thaw cycles.
Concentration	4.61 mg/ml (Please refer to the vial label for the specific concentration.)
Immunogen	Recombinant protein encompassing a sequence within the C-terminus region of human PI3 kinase p150. The exact sequence is proprietary.
Purification	Purified by antigen-affinity chromatography.
Conjugation	Unconjugated

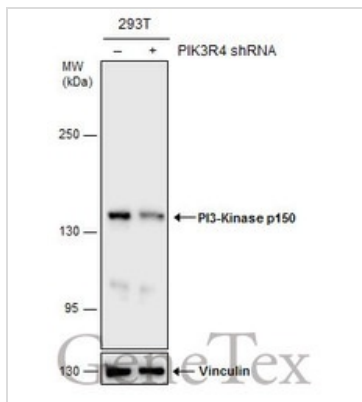
Note For laboratory research use only. Not for any clinical, therapeutic, or diagnostic use in humans or animals. Not for animal or human consumption.

Purchasers shall not, and agree not to enable third parties to, analyze, copy, reverse engineer or otherwise attempt to determine the structure or sequence of the product.

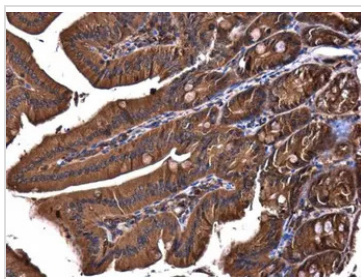


For full product information, images and publications, please visit our [website](#).

DATA IMAGES


GTX132466 WB Image

Non-transfected (-) and transfected (+) 293T whole cell extracts (30 µg) were separated by 5% SDS-PAGE, and the membrane was blotted with PI3-Kinase p150 antibody (GTX132466) diluted at 1:1000.

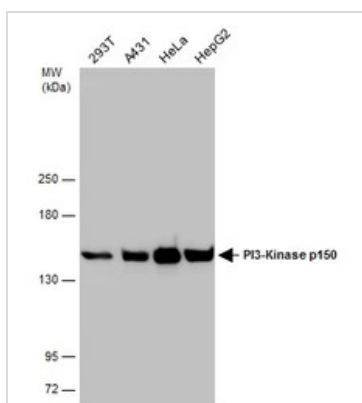

GTX132466 IHC-P Image

PI3-Kinase p150 antibody detects PI3-Kinase p150 protein at cytoplasm in mouse duodenum by immunohistochemical analysis.

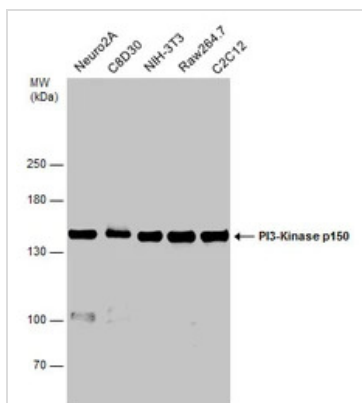
Sample: Paraffin-embedded mouse duodenum.

PI3-Kinase p150 antibody (GTX132466) diluted at 1:500.

Antigen Retrieval: Citrate buffer, pH 6.0, 15 min


GTX132466 WB Image

Various whole cell extracts (30 µg) were separated by 5% SDS-PAGE, and the membrane was blotted with PI3-Kinase p150 antibody (GTX132466) diluted at 1:1000.


GTX132466 WB Image

Various whole cell extracts (30 µg) were separated by 5% SDS-PAGE, and the membrane was blotted with PI3-Kinase p150 antibody (GTX132466) diluted at 1:1000.



For full product information, images and publications, please visit our [website](https://www.genetex.com).