

Heme Oxygenase 1 antibody [HO-1-1]

Cat. No. GTX13248

Host	Mouse
Clonality	Monoclonal
Isotype	IgG1
Application	WB, ICC/IF, IHC-P, FACS
Reactivity	Human, Mouse, Rat, Bovine, Dog

Package
50 µg

APPLICATION

Application Note

For FACS: Use at a concentration of 10 µg/ml. For WB: Use at a concentration of 4 µg/ml. Detects a band of approximately 32 kDa. Optimal dilutions/concentrations should be determined by the end user.

Calculated MW 33 kDa. ([Note](#))

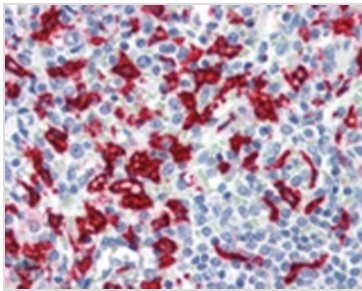
PROPERTIES

Form	Liquid
Buffer	PBS, 50% Glycerol
Preservative	0.09% Sodium azide
Storage	Store as concentrated solution. Centrifuge briefly prior to opening vial. For short-term storage (1-2 weeks), store at 4°C. For long-term storage, aliquot and store at -20°C or below. Avoid multiple freeze-thaw cycles.
Concentration	1 mg/ml (Please refer to the vial label for the specific concentration.)
Immunogen	Synthetic peptide: MERPQPDSMPQDLSEALKEATKEVHTQAEN, corresponding to amino acids 1-30 of Human Heme Oxygenase 1.
Purification	Protein G purified
Conjugation	Unconjugated
Note	For laboratory research use only. Not for any clinical, therapeutic, or diagnostic use in humans or animals. Not for animal or human consumption. Purchasers shall not, and agree not to enable third parties to, analyze, copy, reverse engineer or otherwise attempt to determine the structure or sequence of the product.



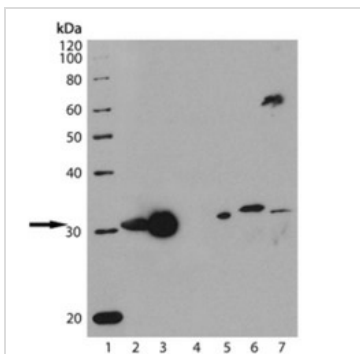
For full product information, images and publications, please visit our [website](#).

DATA IMAGES



GTX13248 IHC-P Image

Immunohistochemistry analysis of human spleen tissue stained with HO-1, mAb (HO-1-1) at 10µg/ml.



GTX13248 WB Image

Western blot analysis of HO-1 (Hsp32), mAb (HO-1-1)

Lane 1: MW marker

Lane 2: HO-1 (rat), (recombinant)

Lane 3: HO-1 (human), (recombinant)

Lane 4: HO-2 (human), (recombinant)

Lane 5: MDBK cell lysate

Lane 6: Dog liver microsome

Lane 7: Mouse liver microsome.



For full product information, images and publications, please visit our [website](https://www.genetex.com).