

## Sox3 antibody

**Cat. No. GTX132494**

<b>Host</b>	Rabbit
<b>Clonality</b>	Polyclonal
<b>Isotype</b>	IgG
<b>Applications</b>	WB, IHC-Fr, IHC-Wm, ChIP assay
<b>Reactivity</b>	Zebrafish

References ( 8 )

Package

100 µl, 25 µl

## Applications

## Application Note

\*Optimal dilutions/concentrations should be determined by the researcher.

Suggested dilution	Recommended dilution
WB	1:500-1:3000
IHC-Fr	Assay dependent
IHC-Wm	1:100-1:500
ChIP assay	Assay dependent

Not tested in other applications.

**Calculated MW** 33 kDa. ( [Note](#) )**Product Note** KO/KD validation is based on published data (PMID: 30588557).

## Properties

<b>Form</b>	Liquid
<b>Buffer</b>	PBS, 20% Glycerol
<b>Preservative</b>	0.025% ProClin 300
<b>Storage</b>	Store as concentrated solution. Centrifuge briefly prior to opening vial. For short-term storage (1-2 weeks), store at 4°C. For long-term storage, aliquot and store at -20°C or below. Avoid multiple freeze-thaw cycles.
<b>Concentration</b>	0.9 mg/ml (Please refer to the vial label for the specific concentration.)
<b>Immunogen</b>	Recombinant protein encompassing a sequence within the center region of zebrafish Sox3. The exact sequence is proprietary.
<b>Purification</b>	Purified by antigen-affinity chromatography.
<b>Conjugation</b>	Unconjugated



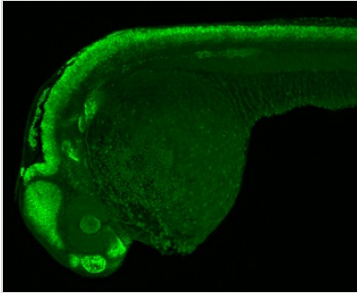
For full product information, images and publications, please visit our [website](#).

Date 2025 / 12 / 05 Page 1 of 2

For laboratory research use only. Not for any clinical, therapeutic, or diagnostic use in humans or animals. Not for animal or human consumption.

**Note**

Purchasers shall not, and agree not to enable third parties to, analyze, copy, reverse engineer or otherwise attempt to determine the structure or sequence of the product.

**DATA IMAGES**

**GTx132494 IHC-Wm Image**

Sox3 antibody detects Sox3 protein on zebrafish by whole mount immunohistochemical analysis.

Sample: 1 day-post-fertilization zebrafish embryo.

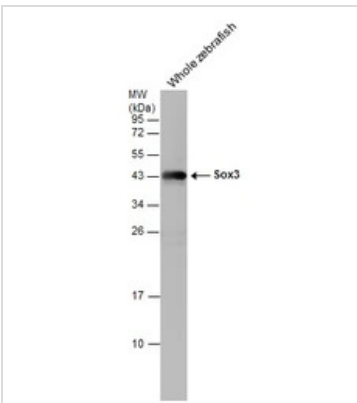
Sox3 antibody (GTx132494) dilution: 1:100.


**GTx132494 IHC-Wm Image**

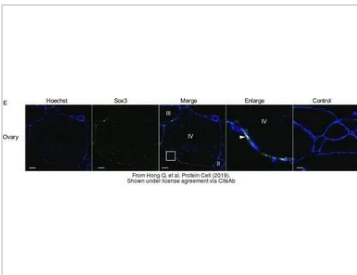
Sox3 antibody detects Sox3 protein on zebrafish by whole mount immunohistochemical analysis.

Sample: 1 day-post-fertilization zebrafish embryo.

Sox3 antibody (GTx132494) dilution: 1:100.


**GTx132494 WB Image**

Whole zebrafish extract (30 µg) was separated by 12% SDS-PAGE, and the membrane was blotted with Sox3 antibody (GTx132494) diluted at 1:1000.


**GTx132494 IHC-Fr Image**

The data was published in the journal Protein Cell in 2019. [PMID: 30588557](https://pubmed.ncbi.nlm.nih.gov/30588557/)



For full product information, images and publications, please visit our [website](https://www.genetex.com).