

Japanese encephalitis virus NS1' antibody

Cat. No. GTX132499

Host	Rabbit
Clonality	Polyclonal
Isotype	IgG
Applications	WB, ICC/IF
Reactivity	Japanese encephalitis virus

Package
100 µl, 25 µl

Applications

Application Note

*Optimal dilutions/concentrations should be determined by the researcher.

Suggested dilution	Recommended dilution
WB	1:5000-1:20000
ICC/IF	1:100-1:5000

Not tested in other applications.

Properties

Form	Liquid
Buffer	PBS, 20% Glycerol
Preservative	0.025% ProClin 300
Storage	Store as concentrated solution. Centrifuge briefly prior to opening vial. For short-term storage (1-2 weeks), store at 4°C. For long-term storage, aliquot and store at -20°C or below. Avoid multiple freeze-thaw cycles.
Concentration	0.73 mg/ml (Please refer to the vial label for the specific concentration.)
Immunogen	Carrier-protein conjugated synthetic peptide encompassing a sequence within the C-terminus region of NS1' (JEV). (Japanese Encephalitis Virus strain Jaoars982) The exact sequence is proprietary.
Purification	Purified by antigen-affinity chromatography.
Conjugation	Unconjugated

Note

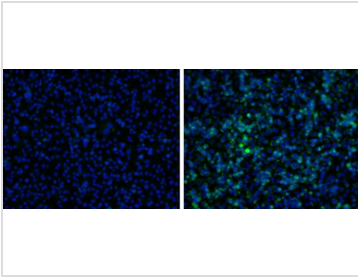
For laboratory research use only. Not for any clinical, therapeutic, or diagnostic use in humans or animals. Not for animal or human consumption.

Purchasers shall not, and agree not to enable third parties to, analyze, copy, reverse engineer or otherwise attempt to determine the structure or sequence of the product.



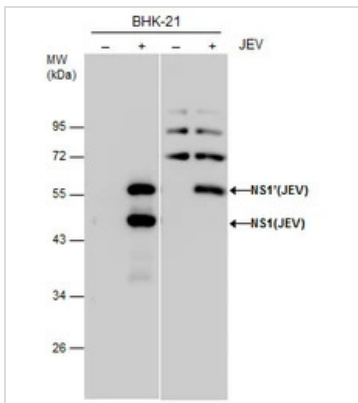
For full product information, images and publications, please visit our [website](#).

DATA IMAGES



GTX132499 ICC/IF Image

JEV NS1' antibody detects JEV NS1' protein by immunofluorescent analysis. Sample: BHK-21 cells mock (left) and infected with JEV (right) were fixed in 4% paraformaldehyde. Green: JEV NS1' protein stained by JEV NS1' antibody (GTX132499) diluted at 1:5000. Blue: DAPI staining.



GTX132499 WB Image

Non-infected (-) and infected (+) BHK-21 cell extracts (30 µg) were separated by 10% SDS-PAGE. Left: the membrane was blotted with JEV NS1 antibody (GTX131370) diluted at 1:5000; Right: the membrane was blotted with JEV NS1' antibody (GTX132499) diluted at 1:20000.



For full product information, images and publications, please visit our [website](https://www.genetex.com).