

Rab5 antibody

Cat. No. GTX13253

Host	Rabbit
Clonality	Polyclonal
Isotype	IgG
Applications	WB, ICC/IF, IHC-Fr, IP, IHC
Reactivity	Human, Mouse, Rat, Zebrafish, Bovine, Dog, Hamster, Guinea pig, Pig, Monkey

References (5)

Package

100 µl

Applications

Application Note

ICC: Use at an assay dependent dilution. IHC: Use at an assay dependent dilution. IP: Use at an assay dependent dilution. WB: Use at a dilution of 1/2000. Detects a band of approximately 26 kDa (predicted molecular weight: 25.8 kDa). An additional higher molecular mass band of unknown identity at ~45 kDa is detected in some samples on immunoblots. Optimal dilutions/concentrations should be determined by the end user.

Properties

Form	Liquid
Buffer	Serum
Preservative	No preservative
Storage	Store as concentrated solution. Centrifuge briefly prior to opening vial. For short-term storage (1-2 weeks), store at 4°C. For long-term storage, aliquot and store at -20°C or below. Avoid multiple freeze-thaw cycles.
Immunogen	Synthetic peptide: PKNEPQNPGANSARGR conjugated to KLH, corresponding to amino acids 182-197 of Human Rab5.
Purification	Unpurified
Conjugation	Unconjugated

Note

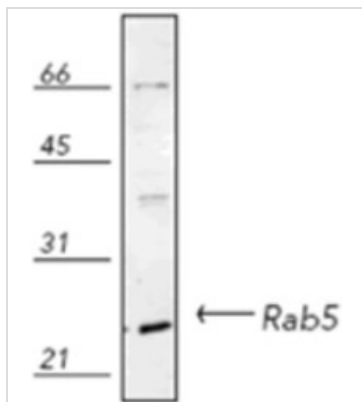
For laboratory research use only. Not for any clinical, therapeutic, or diagnostic use in humans or animals. Not for animal or human consumption.

Purchasers shall not, and agree not to enable third parties to, analyze, copy, reverse engineer or otherwise attempt to determine the structure or sequence of the product.



For full product information, images and publications, please visit our [website](#).

DATA IMAGES



GTX13253 WB Image

Western blot analysis of human HeLa (heat shocked) cell lysate, probed with Rab5 pAb.



For full product information, images and publications, please visit our [website](https://www.genetex.com).