

Park7 / DJ-1 antibody

Cat. No. GTX132556

| | |
|--------------------|------------------|
| Host | Rabbit |
| Clonality | Polyclonal |
| Isotype | IgG |
| Application | WB |
| Reactivity | Human, Zebrafish |

Package
100 µl, 25 µl

APPLICATION

Application Note

*Optimal dilutions/concentrations should be determined by the researcher.

| Suggested dilution | Recommended dilution |
|-----------------------------------|----------------------|
| WB | 1:500-1:3000 |
| Not tested in other applications. | |

Calculated MW 20 kDa. ([Note](#))

PROPERTIES

| | |
|----------------------|--|
| Form | Liquid |
| Buffer | PBS, 20% Glycerol |
| Preservative | 0.025% ProClin 300 |
| Storage | Store as concentrated solution. Centrifuge briefly prior to opening vial. For short-term storage (1-2 weeks), store at 4°C. For long-term storage, aliquot and store at -20°C or below. Avoid multiple freeze-thaw cycles. |
| Concentration | 0.81 mg/ml (Please refer to the vial label for the specific concentration.) |
| Immunogen | Carrier-protein conjugated synthetic peptide encompassing a sequence within the C-terminus region of human Park7 / DJ-1. The exact sequence is proprietary. |
| Purification | Purified by antigen-affinity chromatography. |
| Conjugation | Unconjugated |

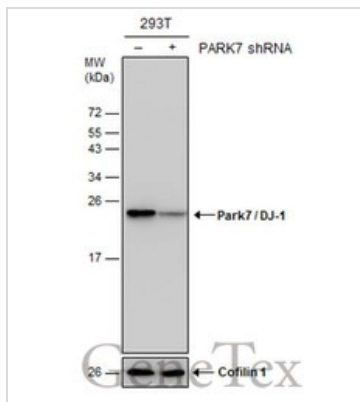
Note

For laboratory research use only. Not for any clinical, therapeutic, or diagnostic use in humans or animals. Not for animal or human consumption.

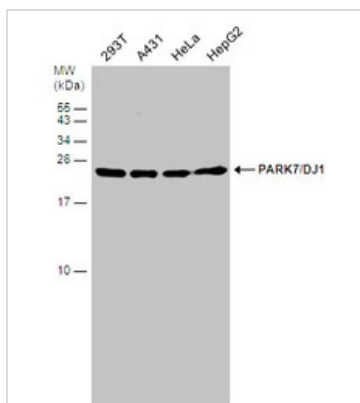
Purchasers shall not, and agree not to enable third parties to, analyze, copy, reverse engineer or otherwise attempt to determine the structure or sequence of the product.



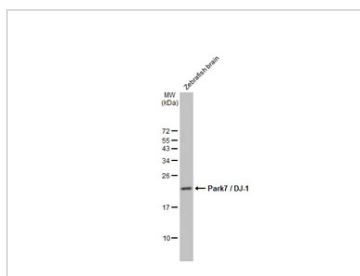
For full product information, images and publications, please visit our [website](#).

DATA IMAGES

GTX132556 WB Image

Non-transfected (–) and transfected (+) 293T whole cell extracts (30 µg) were separated by 15% SDS-PAGE, and the membrane was blotted with Park7 / DJ-1 antibody (GTX132556) diluted at 1:500.


GTX132556 WB Image

Various whole cell extracts (30 µg) were separated by 15% SDS-PAGE, and the membrane was blotted with PARK7/DJ1 antibody (GTX132556) diluted at 1:1000. The signal was developed with Trident ECL plus-Enhanced.


GTX132556 WB Image

Zebrafish tissue extract (30 µg) was separated by 15% SDS-PAGE, and the membrane was blotted with Park7 / DJ-1 antibody (GTX132556) diluted at 1:1000. The HRP-conjugated anti-rabbit IgG antibody (GTX213110-01) was used to detect the primary antibody.



For full product information, images and publications, please visit our [website](https://www.genetex.com).