

Park7 / DJ-1 antibody

Cat. No. GTX132574

Host	Rabbit
Clonality	Polyclonal
Isotype	IgG
Applications	WB, IHC-P
Reactivity	Human, Mouse, Rat, Drosophila

 Review (1)

Package
 100 µl, 25 µl

Applications

Application Note

*Optimal dilutions/concentrations should be determined by the researcher.

Suggested dilution	Recommended dilution
WB	1:500-1:20000
IHC-P	1:100-1:1000

Not tested in other applications.

Calculated MW 20 kDa. ([Note](#))

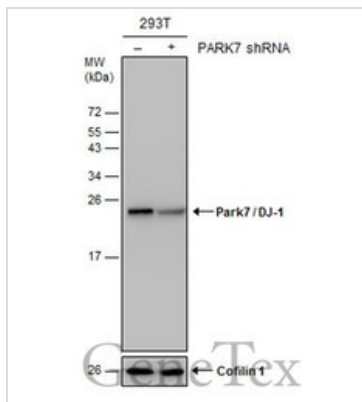
Properties

Form	Liquid
Buffer	PBS, 1% BSA, 20% Glycerol
Preservative	0.025% ProClin 300
Storage	Store as concentrated solution. Centrifuge briefly prior to opening vial. For short-term storage (1-2 weeks), store at 4°C. For long-term storage, aliquot and store at -20°C or below. Avoid multiple freeze-thaw cycles.
Concentration	0.22 mg/ml (Please refer to the vial label for the specific concentration.)
Immunogen	Recombinant protein encompassing a sequence within the center region of human Park7 / DJ-1. The exact sequence is proprietary.
Purification	Purified by antigen-affinity chromatography.
Conjugation	Unconjugated
Note	For laboratory research use only. Not for any clinical, therapeutic, or diagnostic use in humans or animals. Not for animal or human consumption. Purchasers shall not, and agree not to enable third parties to, analyze, copy, reverse engineer or otherwise attempt to determine the structure or sequence of the product.



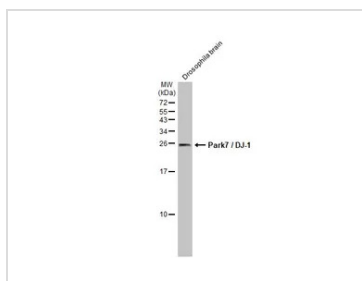
For full product information, images and publications, please visit our [website](#).

DATA IMAGES



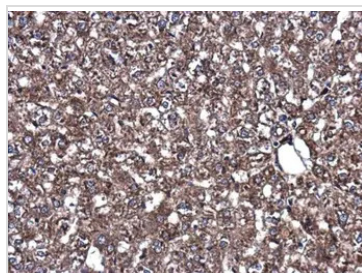
GTX132574 WB Image

Non-transfected (-) and transfected (+) 293T whole cell extracts (30 µg) were separated by 15% SDS-PAGE, and the membrane was blotted with Park7 / DJ-1 antibody (GTX132574) diluted at 1:20000.



GTX132574 WB Image

Drosophila tissue extract (50 µg) was separated by 15% SDS-PAGE, and the membrane was blotted with Park7 / DJ-1 antibody (GTX132574) diluted at 1:1000. The HRP-conjugated anti-rabbit IgG antibody (GTX213110-01) was used to detect the primary antibody, and the signal was developed with Trident ECL plus-Enhanced.

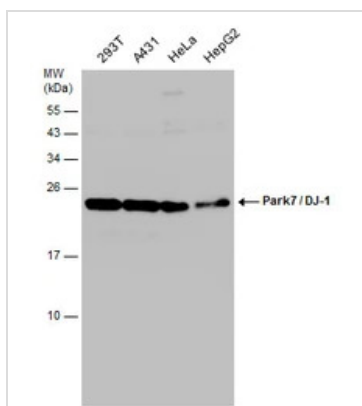


GTX132574 IHC-P Image

Park7/DJ-1 antibody detects Park7/DJ-1 protein at cytoplasm in rat liver by immunohistochemical analysis. Sample: Paraffin-embedded rat liver.

Park7/DJ-1 antibody (GTX132574) diluted at 1:500.

Antigen Retrieval: Citrate buffer, pH 6.0, 15 min



GTX132574 WB Image

Various whole cell extracts (30 µg) were separated by 15% SDS-PAGE, and the membrane was blotted with Park7 / DJ-1 antibody (GTX132574) diluted at 1:1000.



For full product information, images and publications, please visit our [website](http://www.genetex.com).