

# Optineurin antibody

**Cat. No. GTX132575**

<b>Host</b>	Rabbit
<b>Clonality</b>	Polyclonal
<b>Isotype</b>	IgG
<b>Application</b>	WB, ICC/IF, IHC-P, IP
<b>Reactivity</b>	Human, Mouse

Reference ( 1 )

★★★★★ Review ( 2 )

Package

100 µl, 25 µl

## APPLICATION

### Application Note

\*Optimal dilutions/concentrations should be determined by the researcher.

Suggested dilution	Recommended dilution
WB	1:500-1:3000
ICC/IF	1:100-1:1000
IHC-P	1:100-1:1000
IP	Assay dependent

Not tested in other applications.

**Calculated MW** 66 kDa. ( [Note](#) )

## PROPERTIES

<b>Form</b>	Liquid
<b>Buffer</b>	PBS, 20% Glycerol
<b>Preservative</b>	0.025% ProClin 300
<b>Storage</b>	Store as concentrated solution. Centrifuge briefly prior to opening vial. For short-term storage (1-2 weeks), store at 4°C. For long-term storage, aliquot and store at -20°C or below. Avoid multiple freeze-thaw cycles.
<b>Concentration</b>	0.28 mg/ml (Please refer to the vial label for the specific concentration.)
<b>Immunogen</b>	Recombinant protein encompassing a sequence within the center region of human Optineurin. The exact sequence is proprietary.
<b>Purification</b>	Purified by antigen-affinity chromatography.
<b>Conjugation</b>	Unconjugated



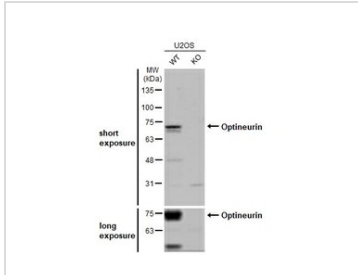
For full product information, images and publications, please visit our [website](#).

For laboratory research use only. Not for any clinical, therapeutic, or diagnostic use in humans or animals. Not for animal or human consumption.

## Note

Purchasers shall not, and agree not to enable third parties to, analyze, copy, reverse engineer or otherwise attempt to determine the structure or sequence of the product.

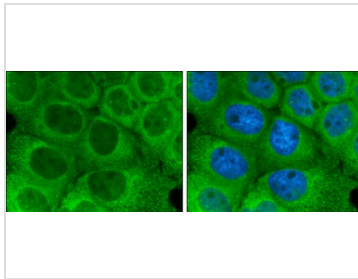
## DATA IMAGES



### GTX132575 WB Image

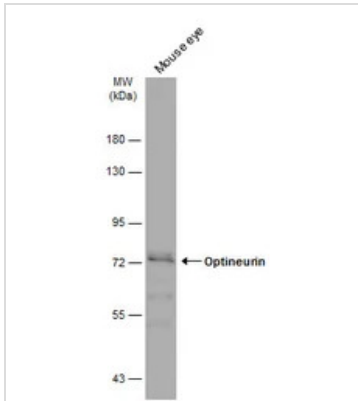
Wild-type (WT) and OPTN knockout (KO) U2OS cell extracts (30 µg) were separated by gradient gel% SDS-PAGE, and the membrane was blotted with Optineurin antibody (GTX132575) diluted at 1:10000. The HRP-conjugated anti-rabbit IgG antibody (GTX213110-01) was used to detect the primary antibody.

Data provided by YCharOS Inc., an open science company with the mission of characterizing commercially available antibody reagents for all human proteins using knockout technology.



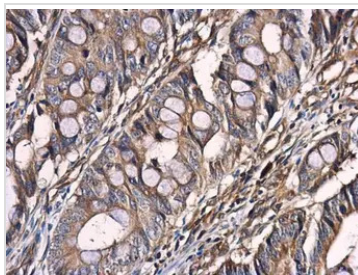
### GTX132575 ICC/IF Image

Optineurin antibody detects Optineurin protein at cytoplasm by immunofluorescent analysis. Sample: A431 cells were fixed in 4% paraformaldehyde at RT for 15 min. Green: Optineurin protein stained by Optineurin antibody (GTX132575) diluted at 1:500.



### GTX132575 WB Image

Mouse tissue extract (50 µg) was separated by 7.5% SDS-PAGE, and the membrane was blotted with Optineurin antibody (GTX132575) diluted at 1:500. The HRP-conjugated anti-rabbit IgG antibody (GTX213110-01) was used to detect the primary antibody.



### GTX132575 IHC-P Image

Optineurin antibody detects Optineurin protein at cytoplasm in human colon cancer by immunohistochemical analysis. Sample: Paraffin-embedded human colon cancer. Optineurin antibody (GTX132575) diluted at 1:500.

Antigen Retrieval: Citrate buffer, pH 6.0, 15 min



For full product information, images and publications, please visit our [website](https://www.genetex.com).